

Service  
Service  
**Service**



# Service Manual

## TABLE OF CONTENTS

	Chapter
Technical Specification, PCBs Location.....	1
Safety Instruction .....	2
Instruction for Use.....	3
Mechanical and Dismantling Instructions.....	4
Service Modes, Troubleshooting.....	5
Overall Block Diagram, Wiring Diagram.....	6
Electrical Diagram.....	7
Exploded View Diagram & Service Part List.....	8
Revision List.....	9

© Copyright 2011 Philips Consumer Electronics B.V. Eindhoven, The Netherlands  
All rights reserved. No part of this publication may be reproduced, stored in a retrieval system or transmitted, in any form or by any means, electronic, mechanical, photocopying, or otherwise without the prior permission of Philips.



Published by CY\_SL1108 BG AVM Printed in The Netherlands Subject to modification

314178535911

Version 1.1



# PHILIPS

## 1.1 Specifications

---

Specifications are subject to change without notice

### Video

Signal system: PAL / NTSC

Composite video output: 1 Vp-p (75 ohm)

Component video output: 480/576i, 480/576p, 720p, 1080i

Y: 1 Vp-p (75 ohm)

Pb: 0.7 V-pp (75 ohm)

Pr: 0.7 V-pp (75 ohm)

HDMI output 480p, 576p, 720p, 1080i, 1080p, 1080p24

### Audio

2 Channel analog output

Audio Front L&R : 2 Vrms (> 1 kohm)

Digital output: 0.5 Vp-p (75 ohm)

Coaxial

HDMI output

Sampling frequency:

MP3: 32 kHz 44.1 kHz 48 kHz

WMA: 44.1 kHz 48 kHz

Constant bit rate:

MP3: 112 kbps - 320 kbps

WMA: 48 kbps - 192 kbps

### USB

Compatibility: Hi-Speed USB (2.0)

Class support: UMS (USB Mass Storage Class)

### Main unit

Power supply rating: AC 220-240V, 50 Hz

Power consumption: 25 W

Power consumption in standby mode: < 0.5 W

Dimensions (w x h x d): 435 x 60 x 227 (mm)

Net Weight: 2.35 kg

### Accessories supplied

Remote control and batteries

Audio/Video cables

Power cable

Quick start guide

User manual

CD-ROM built in multi-lingual user manual

### Laser Specification

Laser Type:

BD Laser Diode: AlGaInN

DVD Laser Diode: AlGaInP

CD Laser Diode: AlGaInP

Wave length

BD: 405 +5nm/-5nm

DVD: 655 +10nm/-10nm

CD: 790 +10nm/-20nm

### Output power:

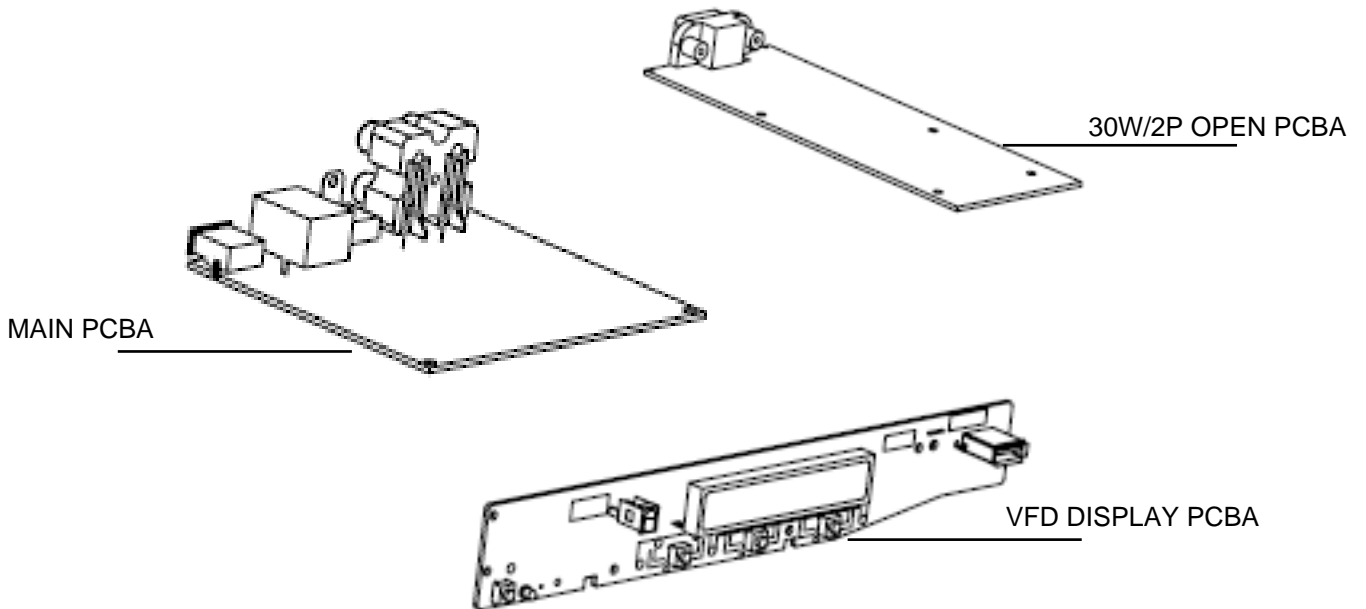
BD: Max. ratings: 20mW

DVD: Max. ratings: 6mW

CD: Max. ratings: 7mW

1.1 PCBs Location

---



VERSION VARIATIONS

Type/Versions: Service policy	BDP3200						
	51	55	77	78			
Board in used:							
MAIN BOARD	C	C	C	C			
VFD DISPLAY PCBA	C	C	C	C			
30W/2P OPEN PCBA	M	M	M	M			

\*TIPS: C -- Component Lever Repair.  
 M -- Module Lever Repair  
 X -- OCX

## Software check and upgrade

### Preparation to upgrade software

- 1) Start the CD burning software & create a folder named "UPGAL
- 2) Then copy the Bin file (BDP3XXXXX-XXX-XXXXXX.bin) into it,
- 3) Burn the data onto the blank CD.

#### A. Procedure for software upgrade

##### A) Upgrade software via Disc

- 1) Power on the set and insert the prepared Upgrade CDR.
- 2) The set will start reading disc & response with the following display TV screen:  
Now searching for upgrade software!  
Please wait...!
- 3) Then screen will display :  
software upgrades for this player has been found!Do you want to upgrade?  
  

Cancel	Start
--------	-------
- 4) Press Right cursor button to choose "Start", then press <OK>;
- 5) The software will upgrade and screen will display as below:  
Upgrade is ongoing, Please wait...  
Please do not unplug or switch off the device.
- 6) Restart the set.

##### B) Update software via USB Flash Drive:

- 1) Go to [www.philips.com/support](http://www.philips.com/support) to check if the latest software version is available for this player.
- 2) Download the software onto a USB flash drive's root DIR named "UPGAL
- 3) Insert the USB flash drive to the USB jack of the rear panel.
- 4) In the Home menu, select <Setup>-<Advanced>-<Software update>-<USB>.
- 5) Then press OK
- 6) you'll see now searching for new software, please wait.....
- 7) Waiting, the you'll see "software for this player has been found ....."
- 8) Then select "Start" and press "OK"
- 9) then you'll see "upgrade is ongoing .....", wait until it ends.
- 10) Player will restart automatically or press "Restart now" to restart, after restarting the upgrade ends.

#### B. Read out the software versions to confirm upgrading

- 4) In homemenu, enter "setup"->"advanced"->"version info", press "OK"

and other information will display on the TV screen as below:

Model:XXX.XXX  
 Versions  
 subinfo:xxxx  
 system SW:xxxx  
 ethernet MAC:xxxxxxxx  
<http://www.philips.com/support>

Caution: The set must not be power off during upgrading, otherwise the Main board will be damaged entirely.

## 2.0 Safety instruction

---

### 1. General safety

Safety regulations require that during a repair:

- . Connect the unit to the mains via an isolation transformer.
- . Replace safety components indicated by the symbol  
Only by components identical to the original ones.
- Any  
Other component substitution (other than original type)  
May increase risk of fire or electrical shock hazard.

Safety regulations require that after a repair, you must

Return the unit in its original condition. Pay, in particular,

Attention to the following points:

- . Route the wires/cables correctly, and fix them with the  
mounted cable clamps
- . Check the insulation of the mains lead for external  
Damage
- . Check the electrical DC resistance between the  
mains

Plug and the secondary side:

- 1) Unplug the mains cord, and connect a wire between  
The two pins of the mains plug.
- 2) Set the mains switch the "on" position (keep the  
Mains cord unplug).
- 3) Measure the resistance value between the  
mains  
plug and the front panel, controls, and chassis  
bottom.
- 4) Repair or correct unit when the resistance  
measurement is less than 1M  $\Omega$
- 5) Verify this, before you return the unit to the  
customer/user (ref. UL-standard no. 1492).
- 6) Switch the unit "off", and remove the wire  
between  
the two pins of the mains plug.

### 2. Laser safety

This unit employs a laser. Only qualified service personnel

May remove the cover, or attempt to service this device

(due to possible eye injury).

Laser device unit

Type :Semiconductor laser GaAIAs

Wavelength :650nm (DVD)

:780nm (VCD/CD)

Output power :7mW(DVD)

:10mW(DVD/CD)

Beam divergence:60 degree

Note: Use of controls or adjustments or performance of procedure other than those specified herein, may result in hazardous radiation exposure. Avoid direct exposure to beam.

### 3.0 Instruction for Use

---

You can download this information from the following websites:

<http://www.philips.com/support>

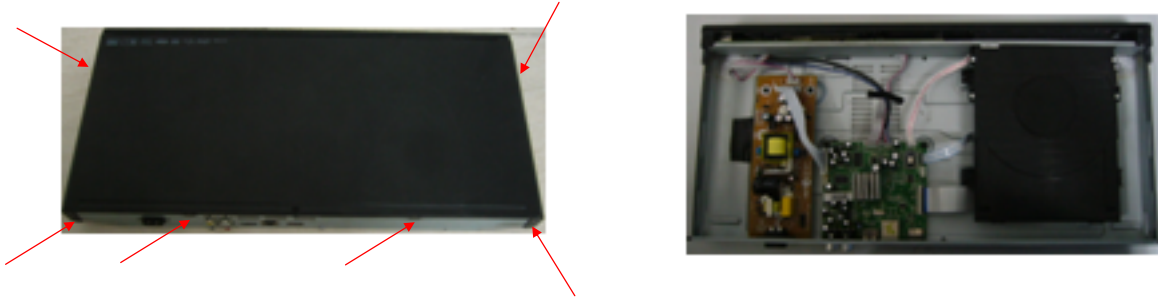
<http://www.p4c.philips.com>

## 4.0 MECHANICAL AND DISMANTLING INSTRUCTIONS

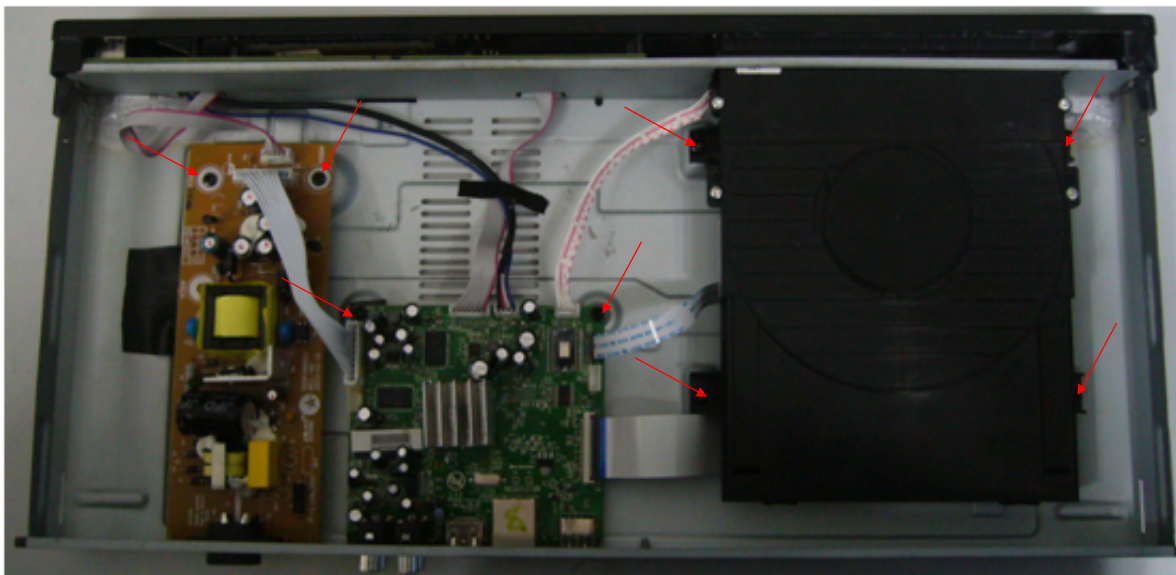
---

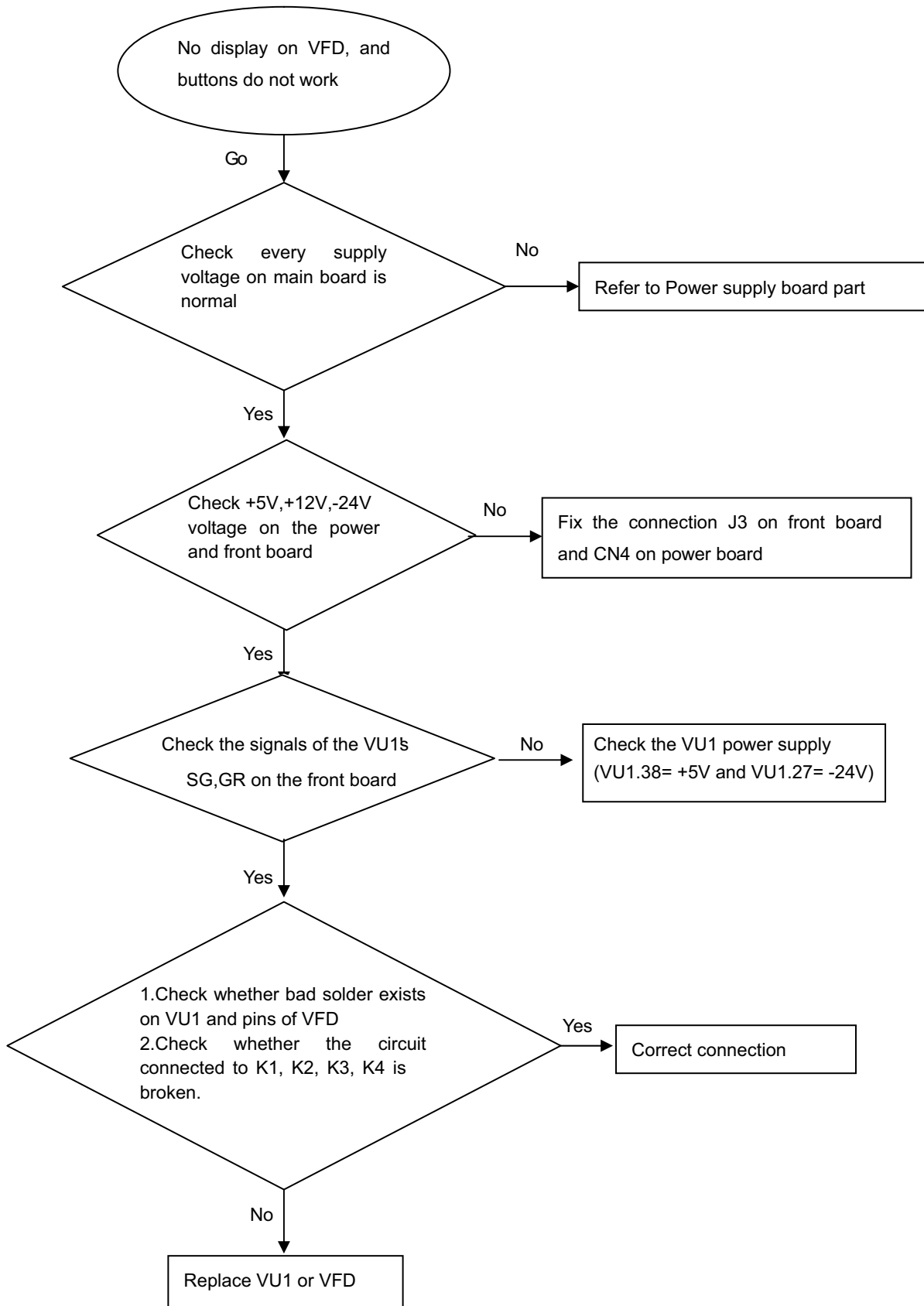
The following guidelines show how to dismantle the player.

Step1: Remove 6 screws around the Top Cover, and then remove the Top Cover(Figure1)

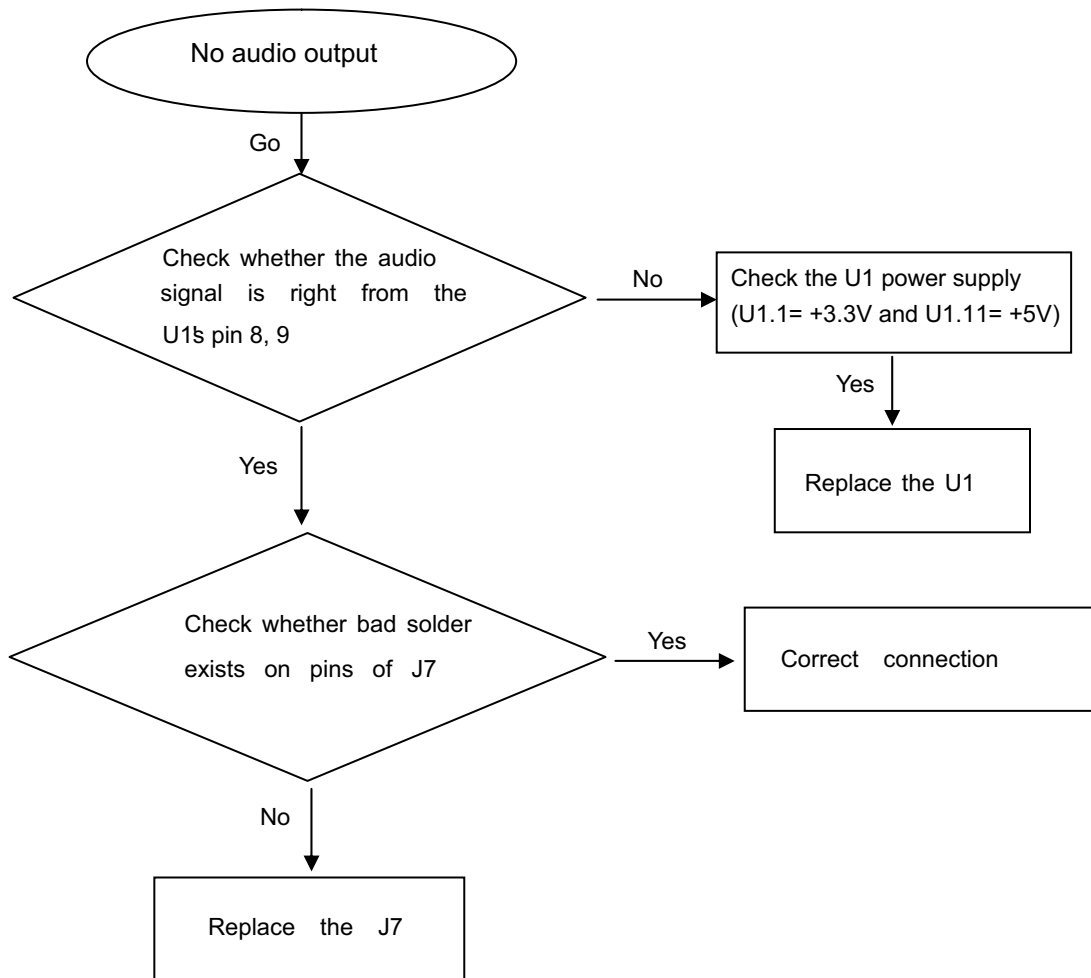


Step2: Remove the 8 screws on board to dismantle the DVD BOARD & POWER BOARD & LED BOARD & DECK

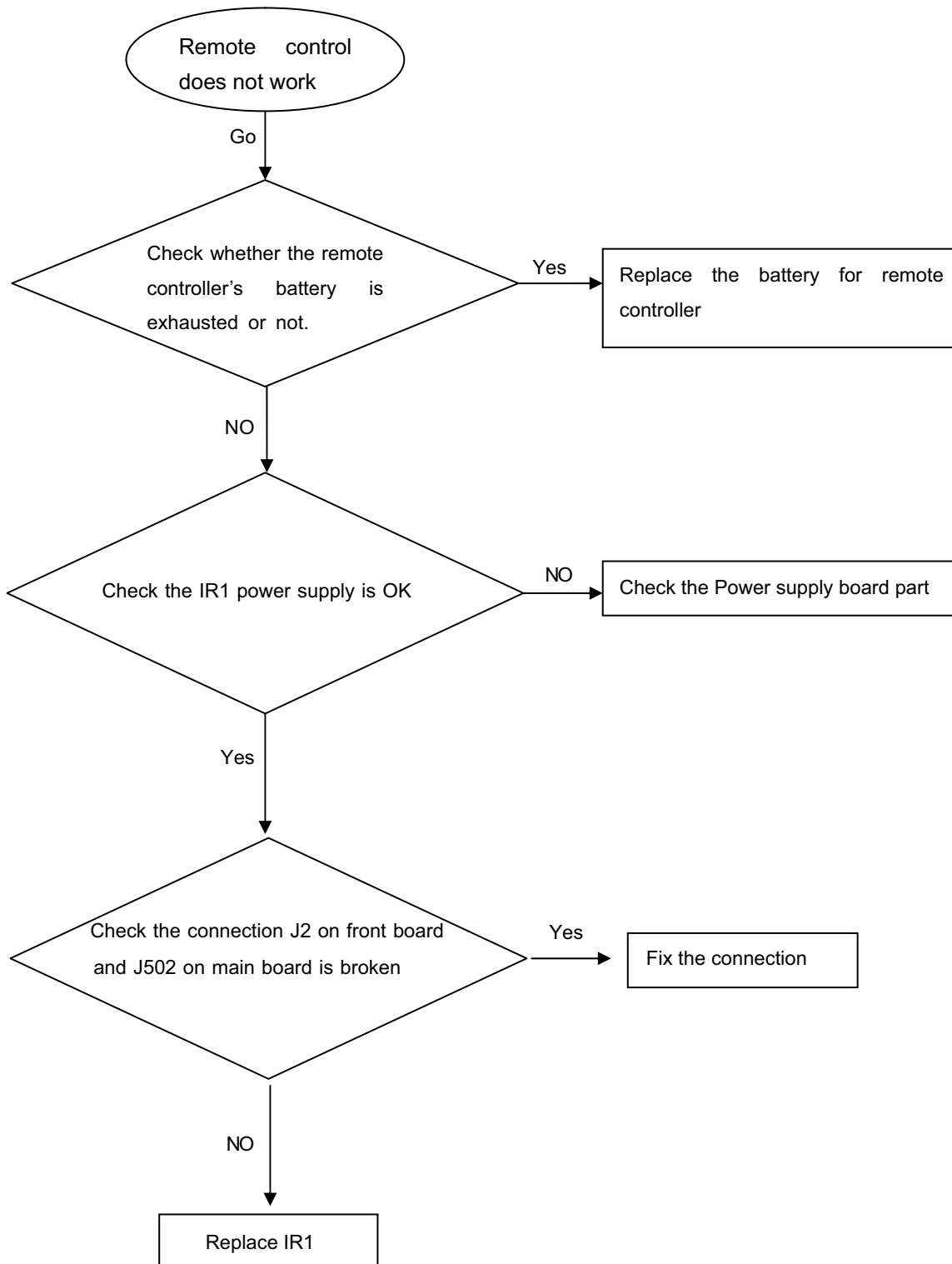


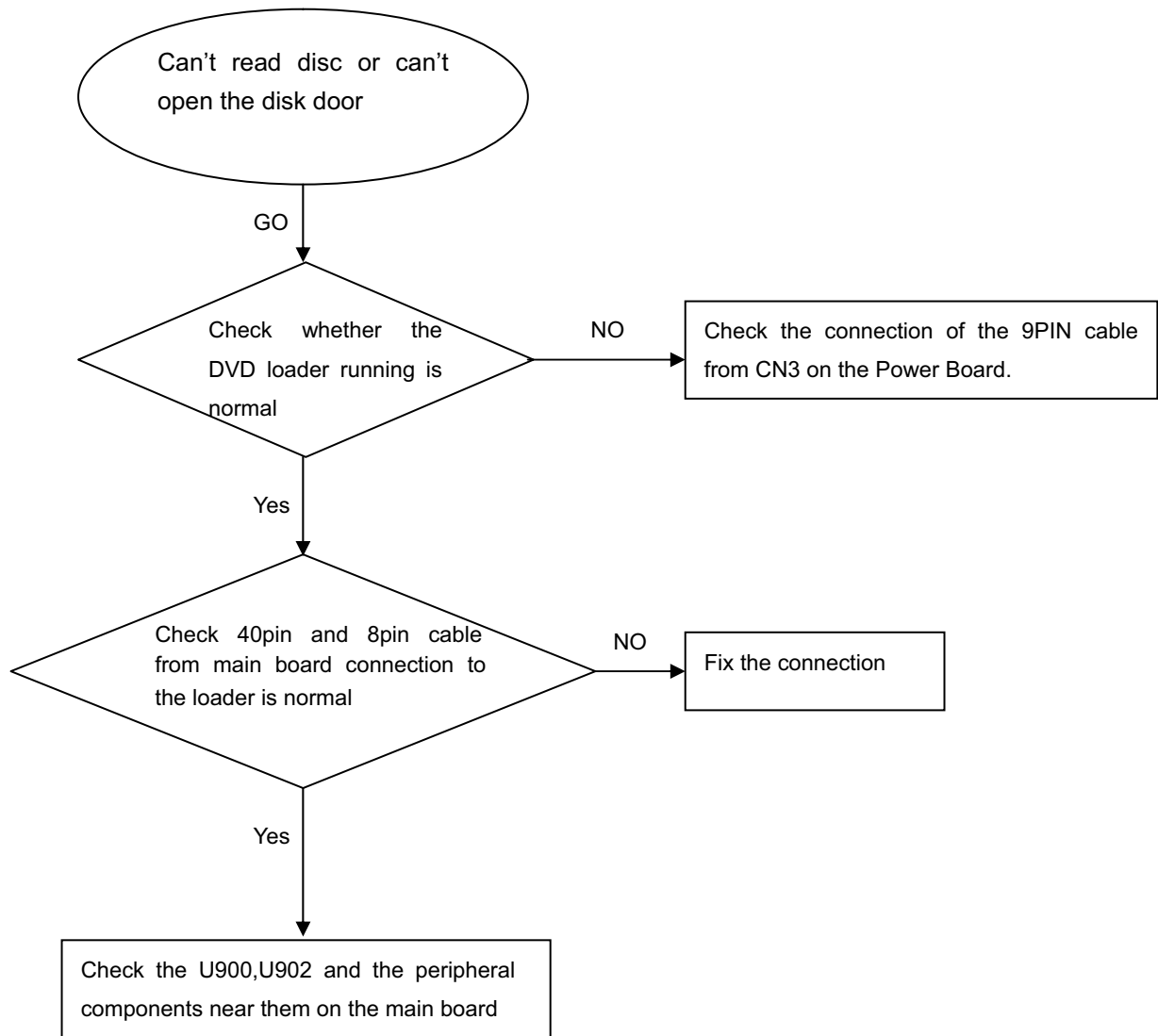
**No display on VFD, and buttons do not work**



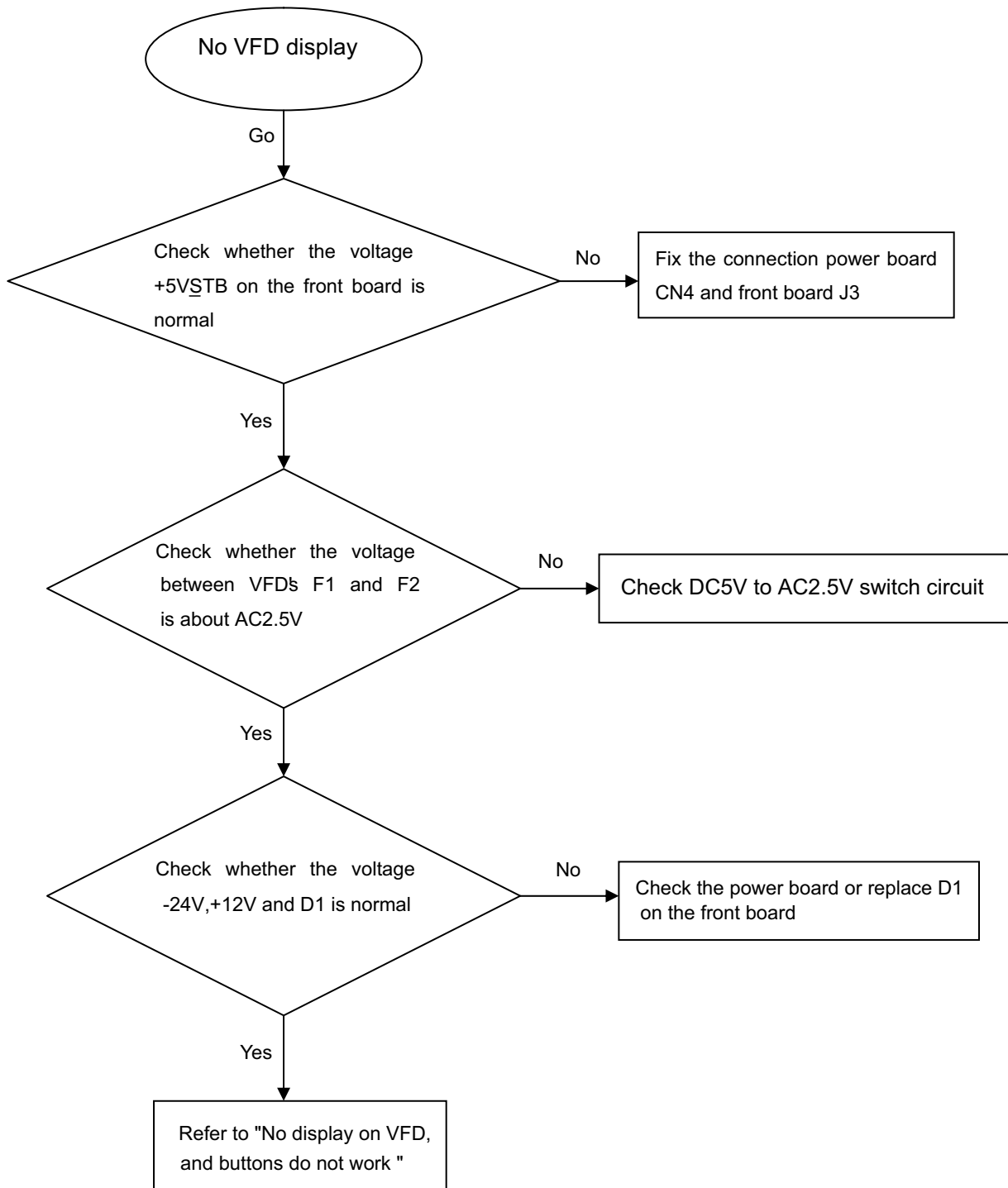
**No audio output**

## Remote control does not work

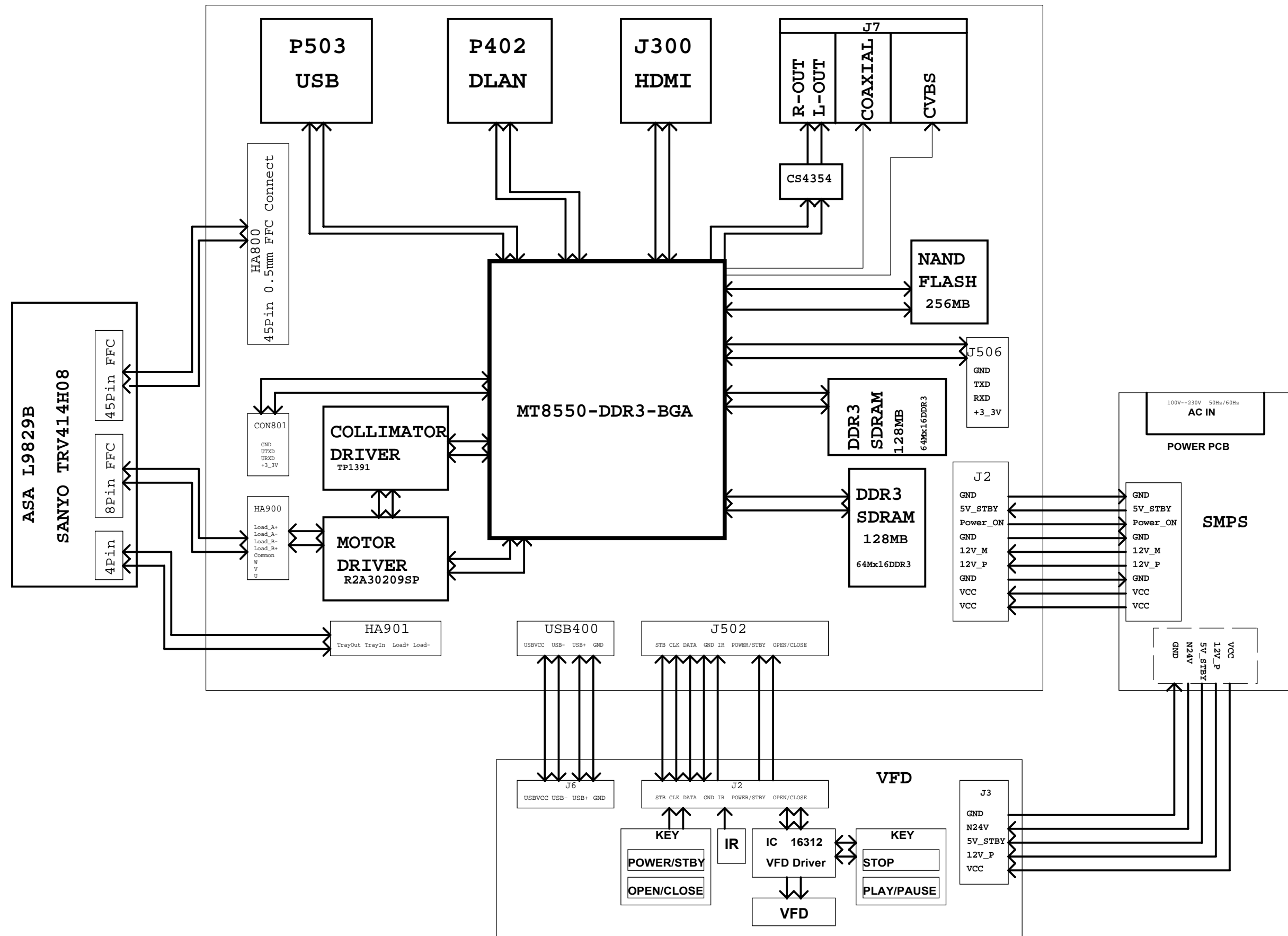


**Can't read disc or can't open the disk door**

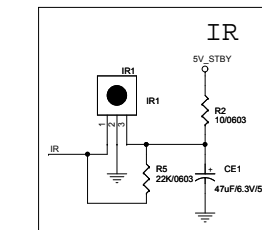
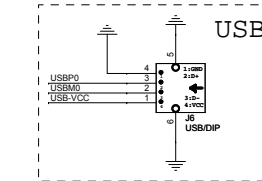
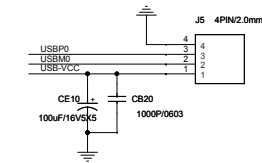
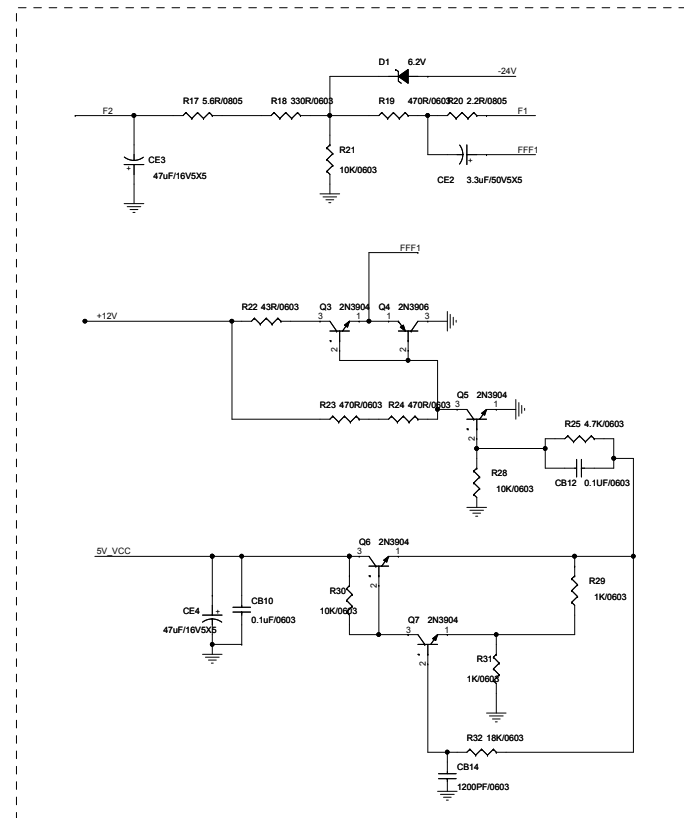
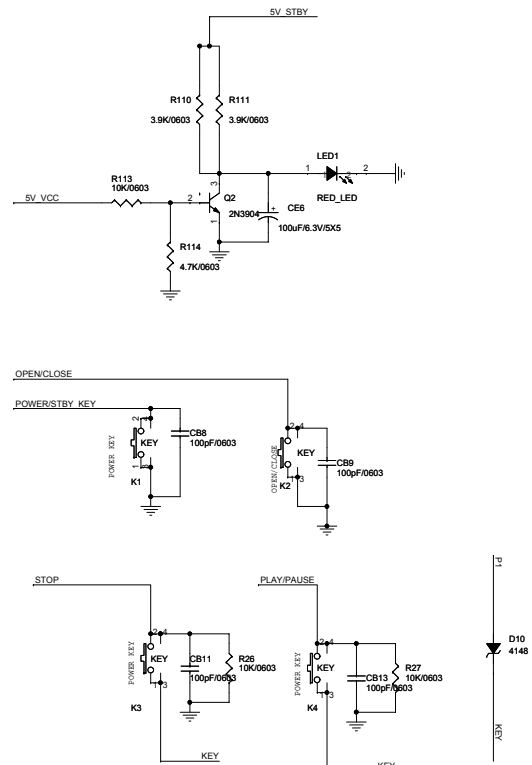
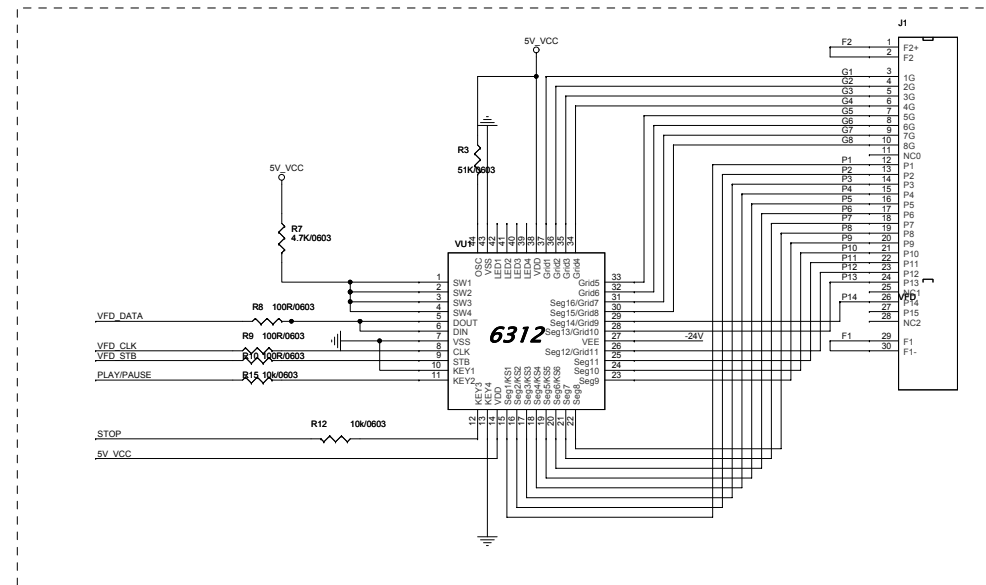
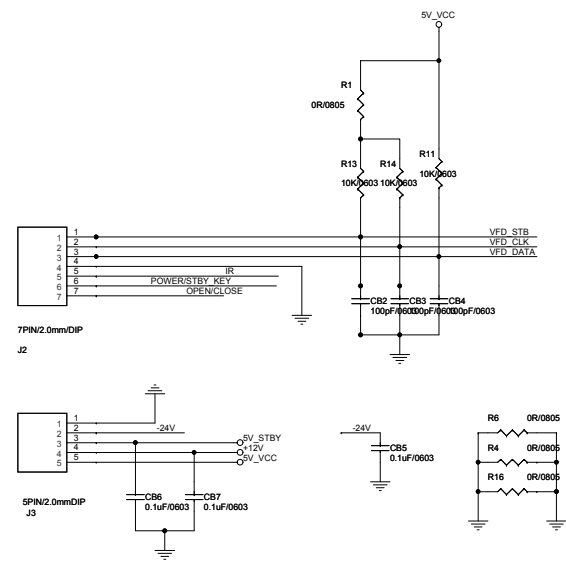
## No VFD display



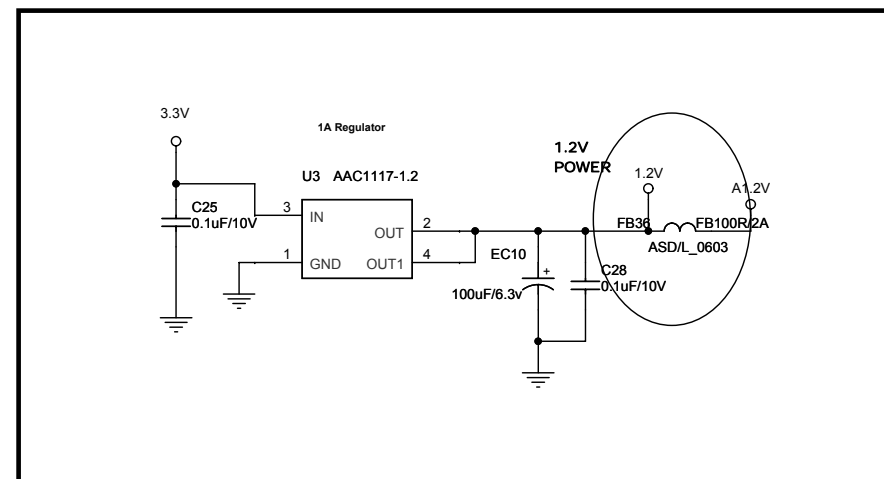
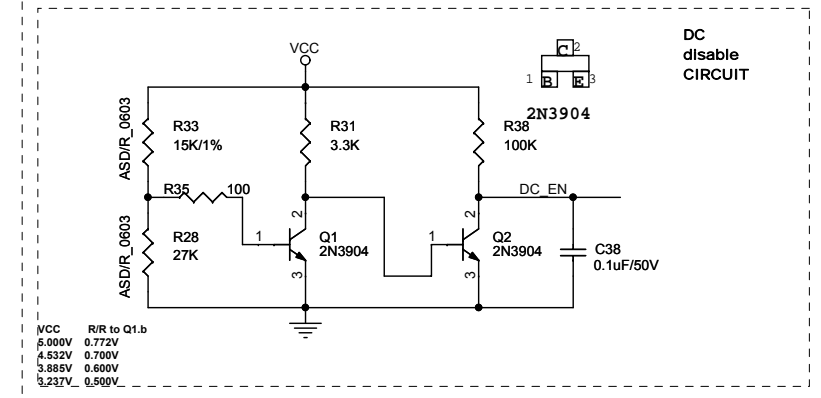
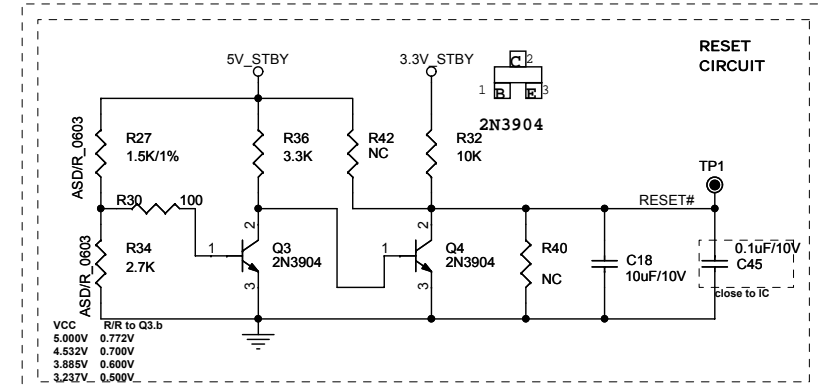
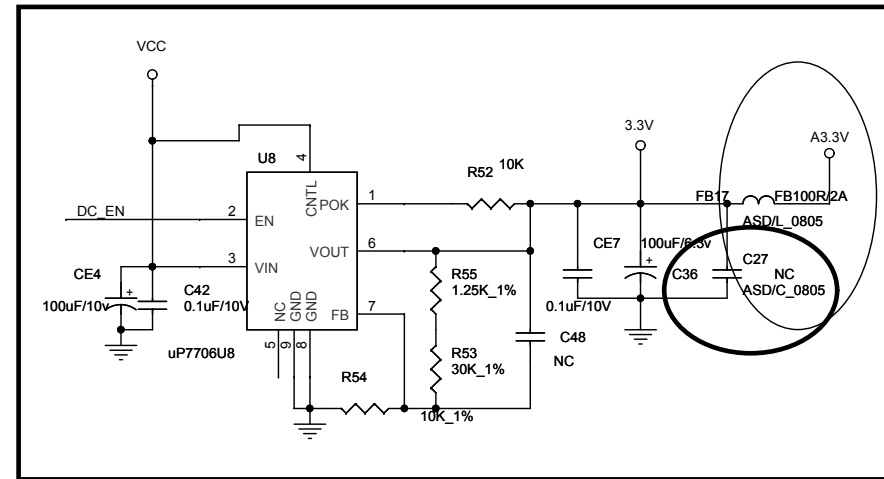
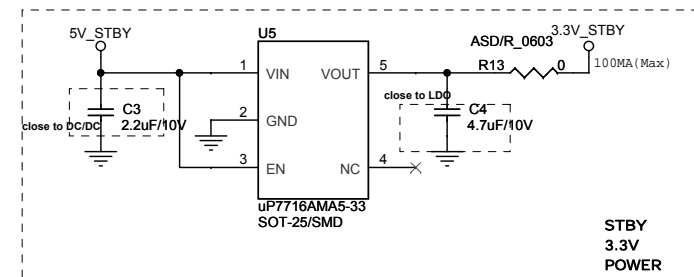
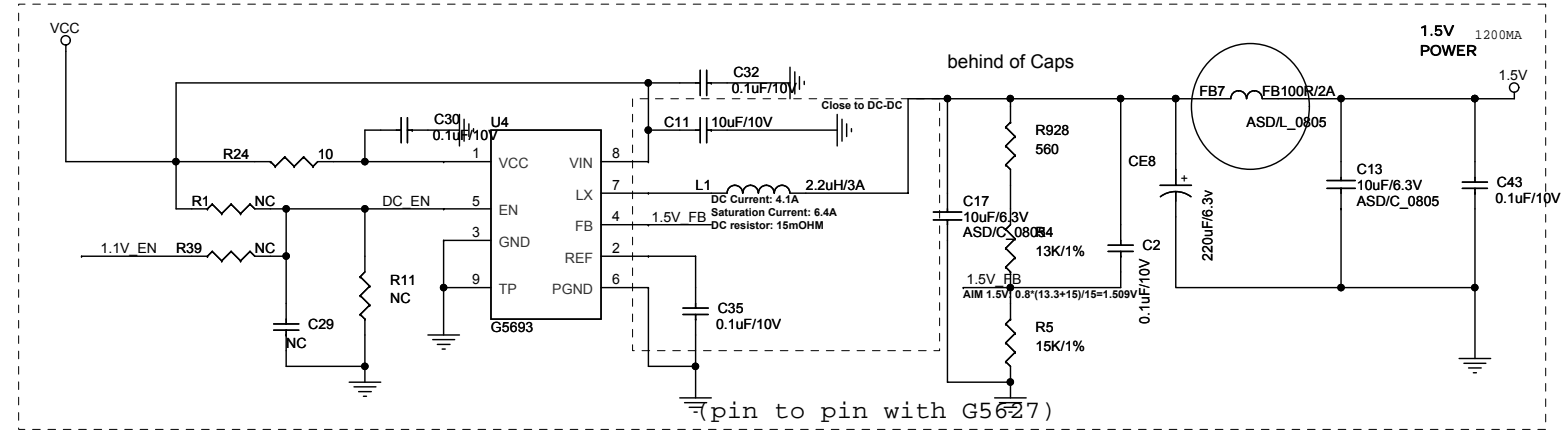
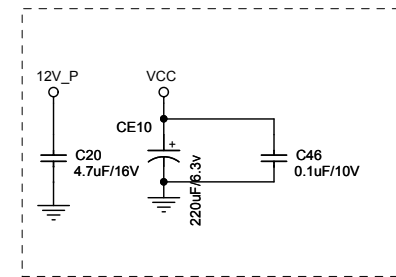
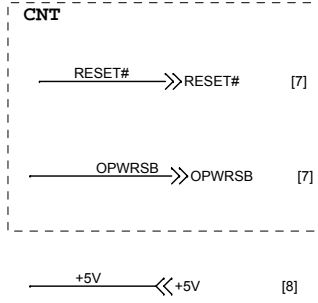
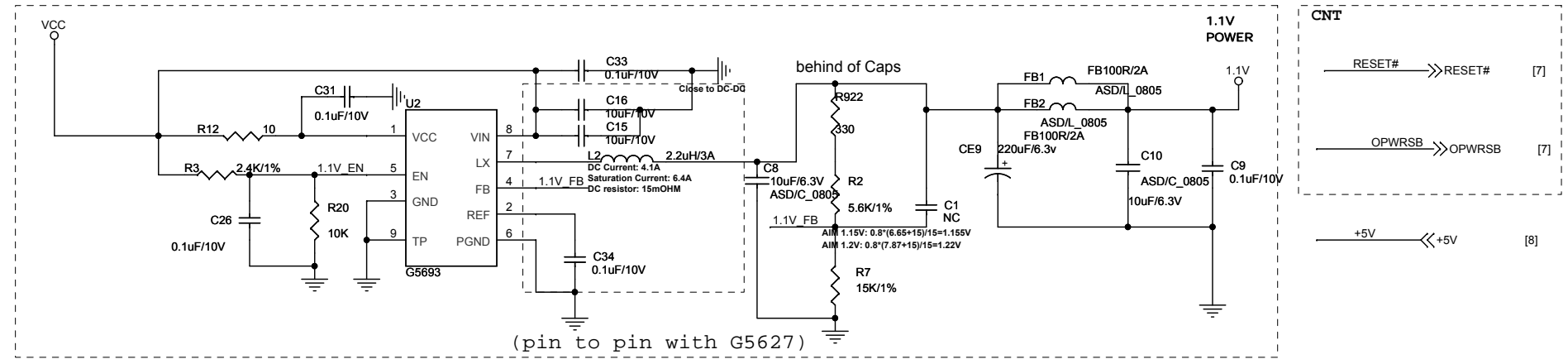
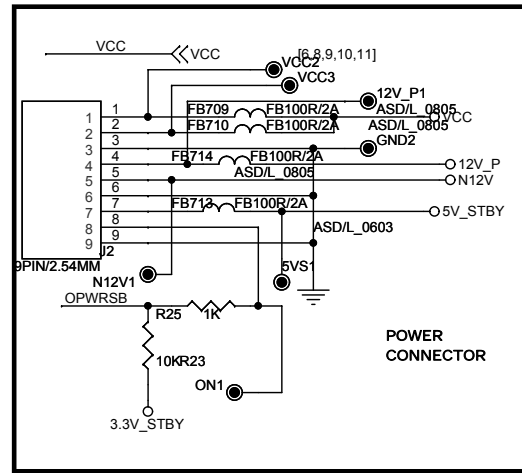
OVERALL BLOCK DIAGRAM



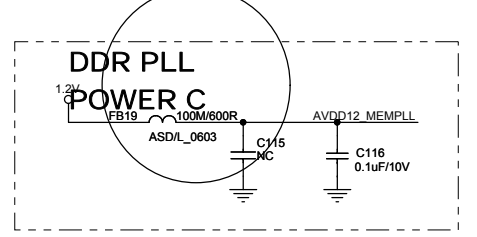
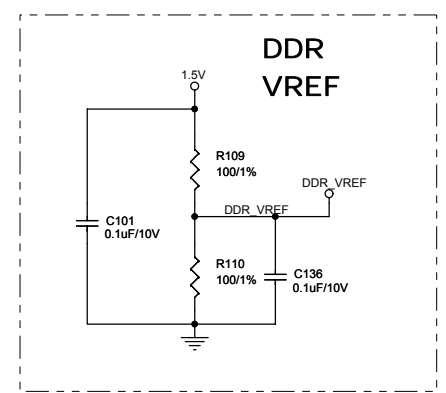
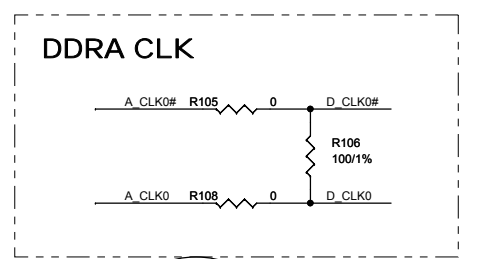
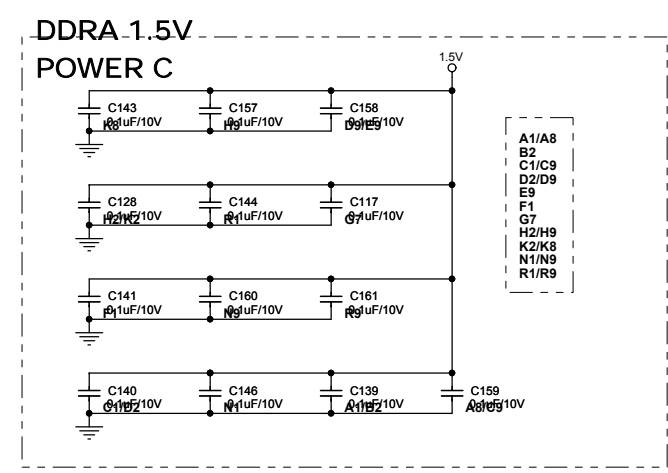
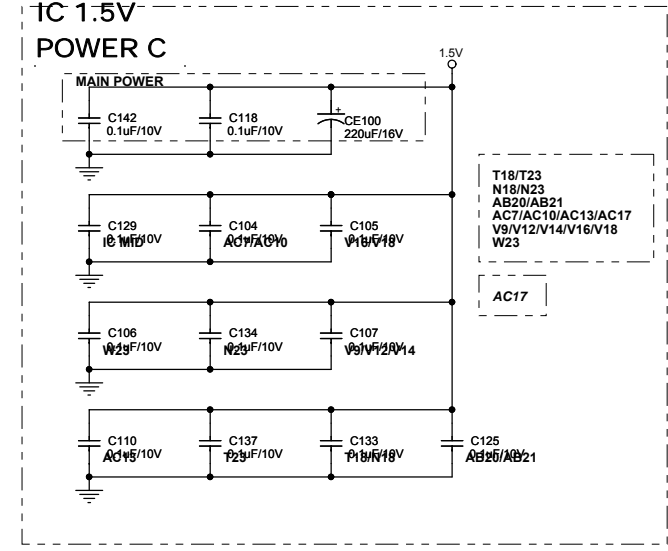
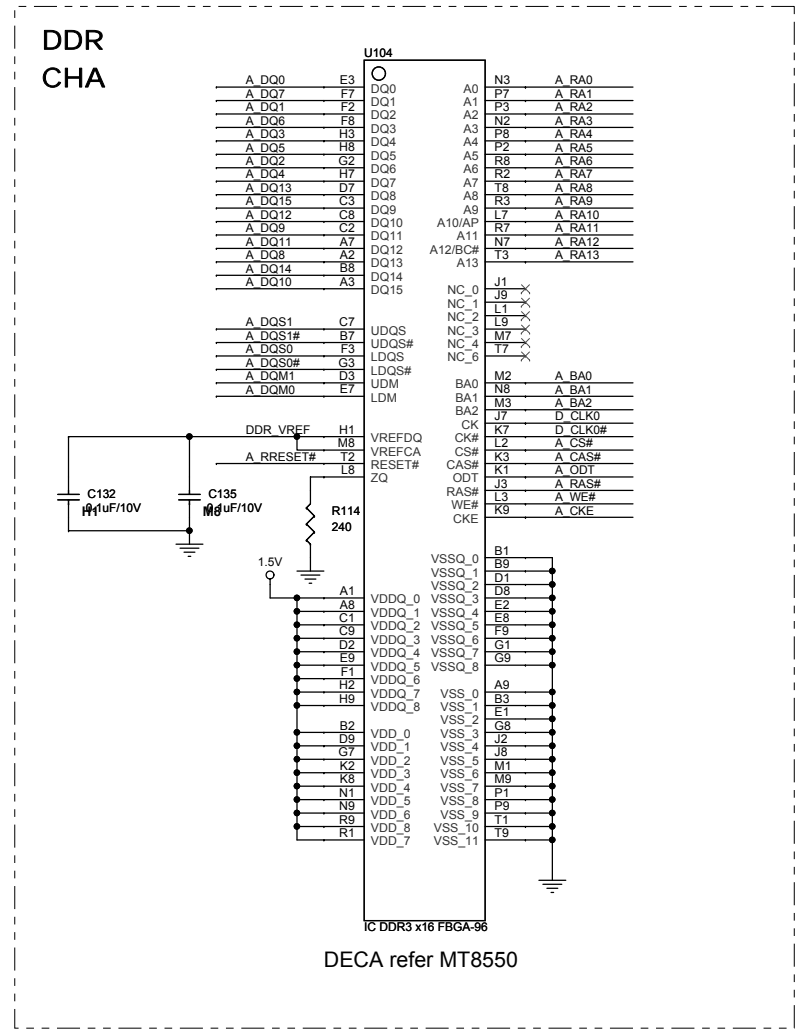
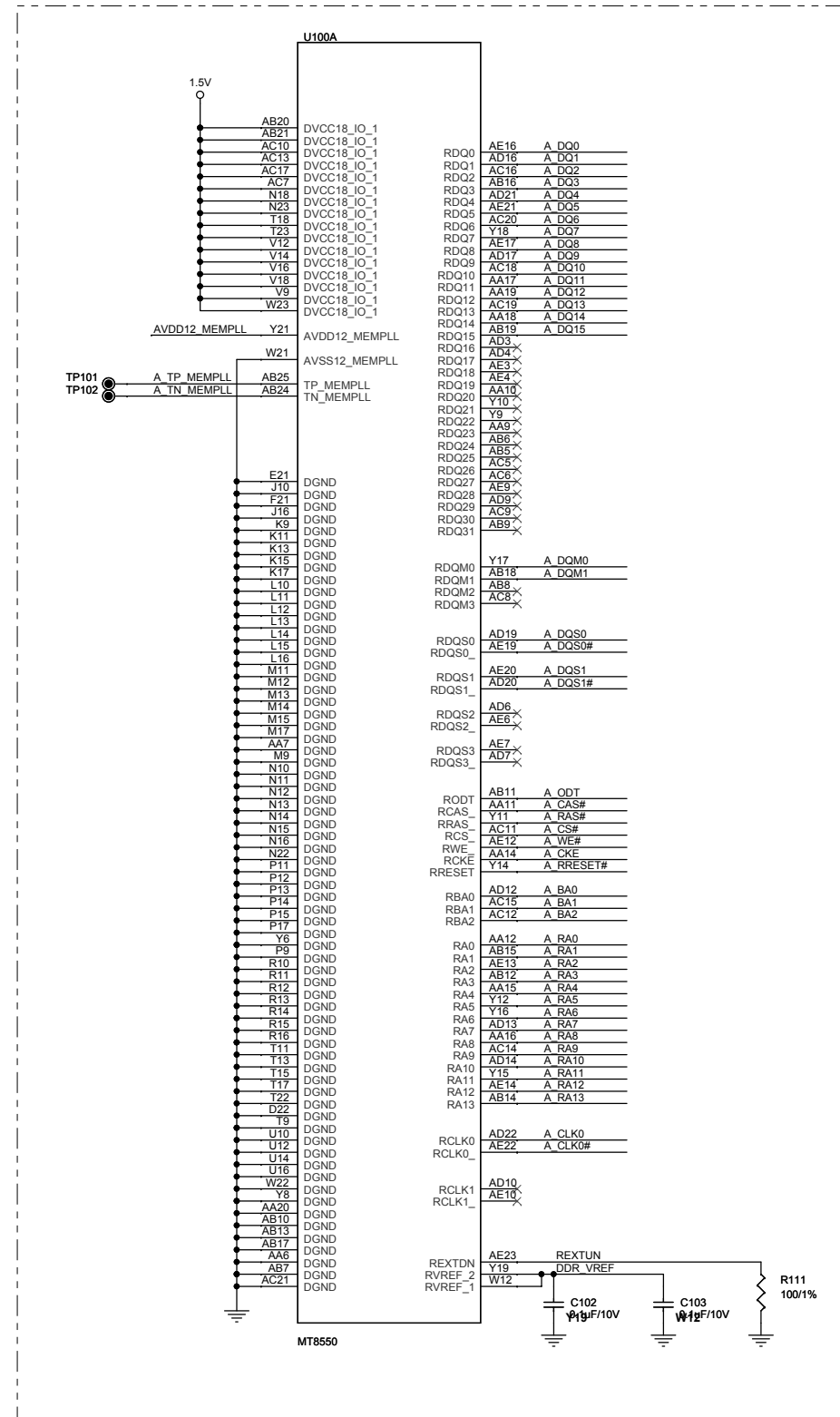
# CIRCUIT DIAGRAM-Front Board



CIRCUIT DIAGRAM-DVD Main Board

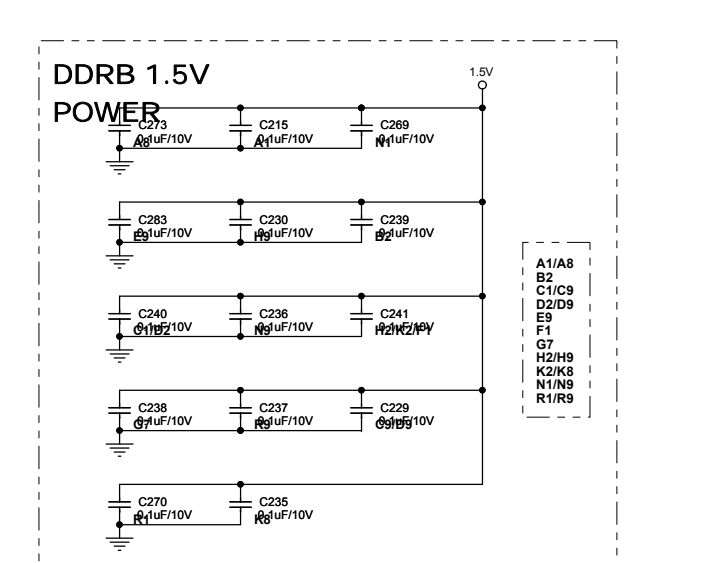
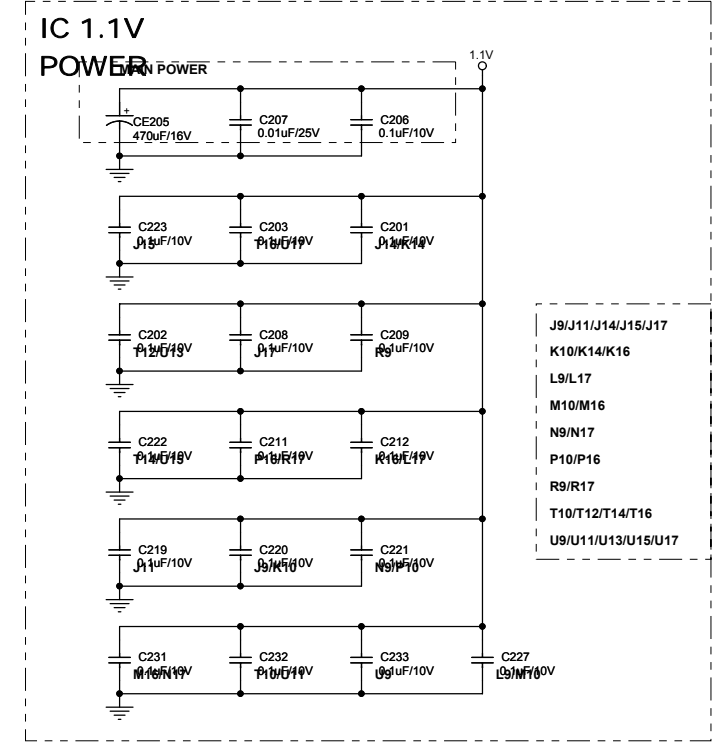
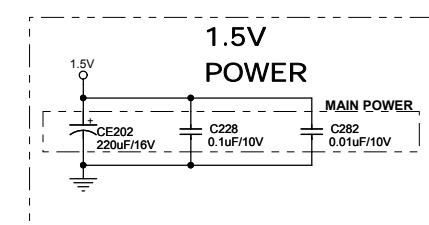
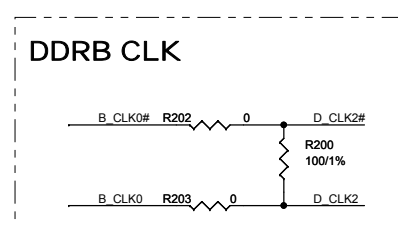
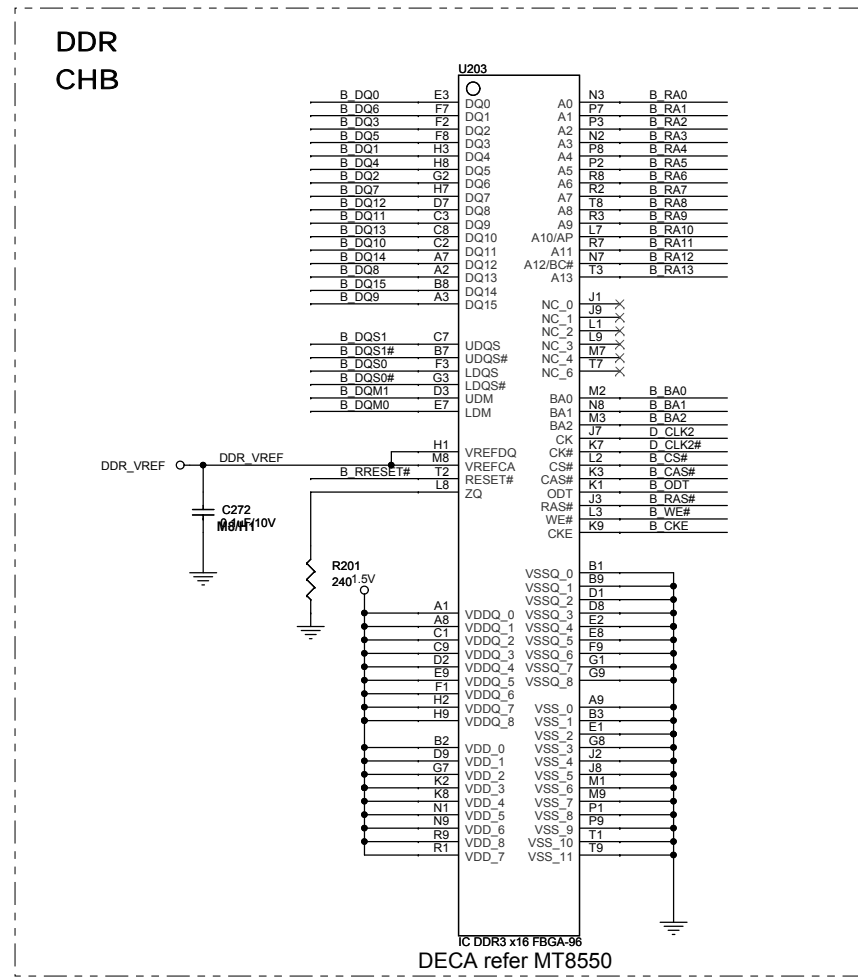
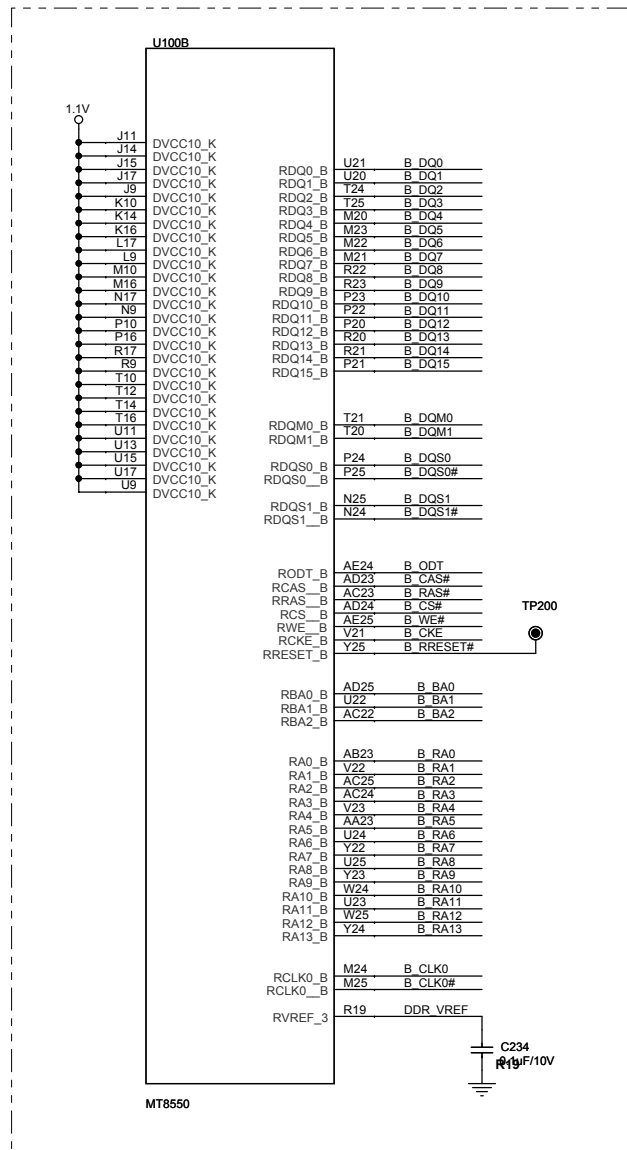


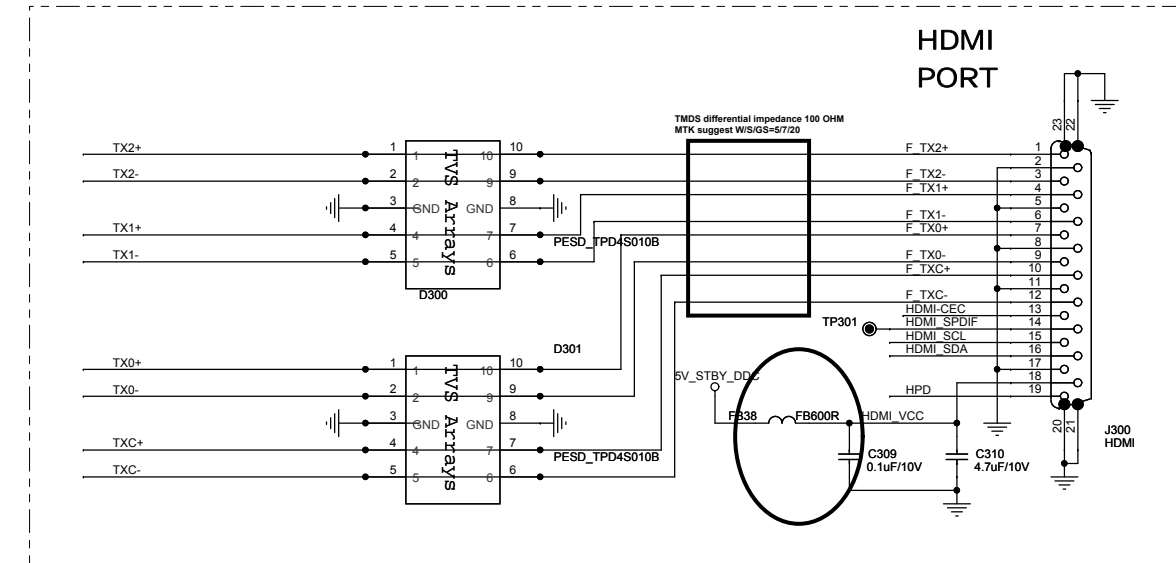
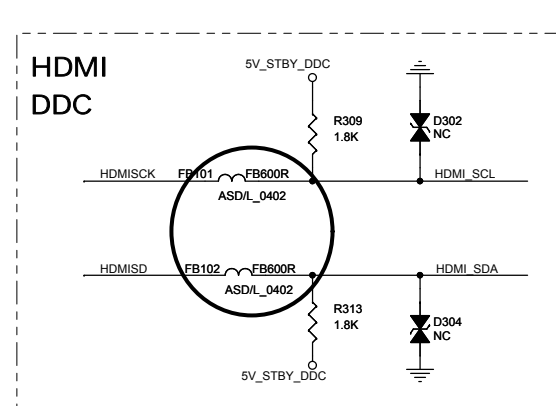
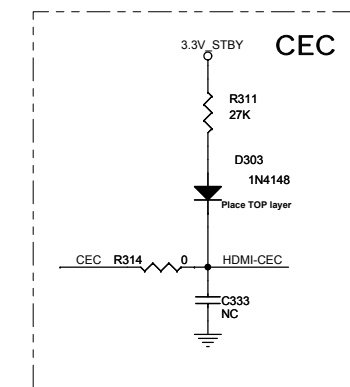
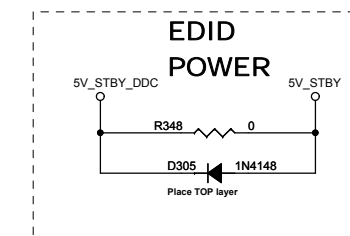
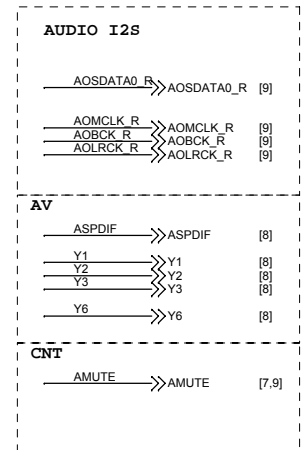
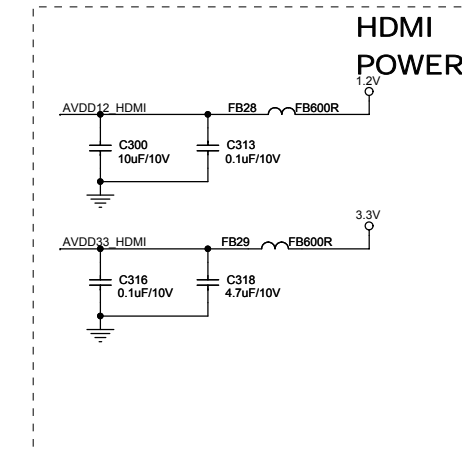
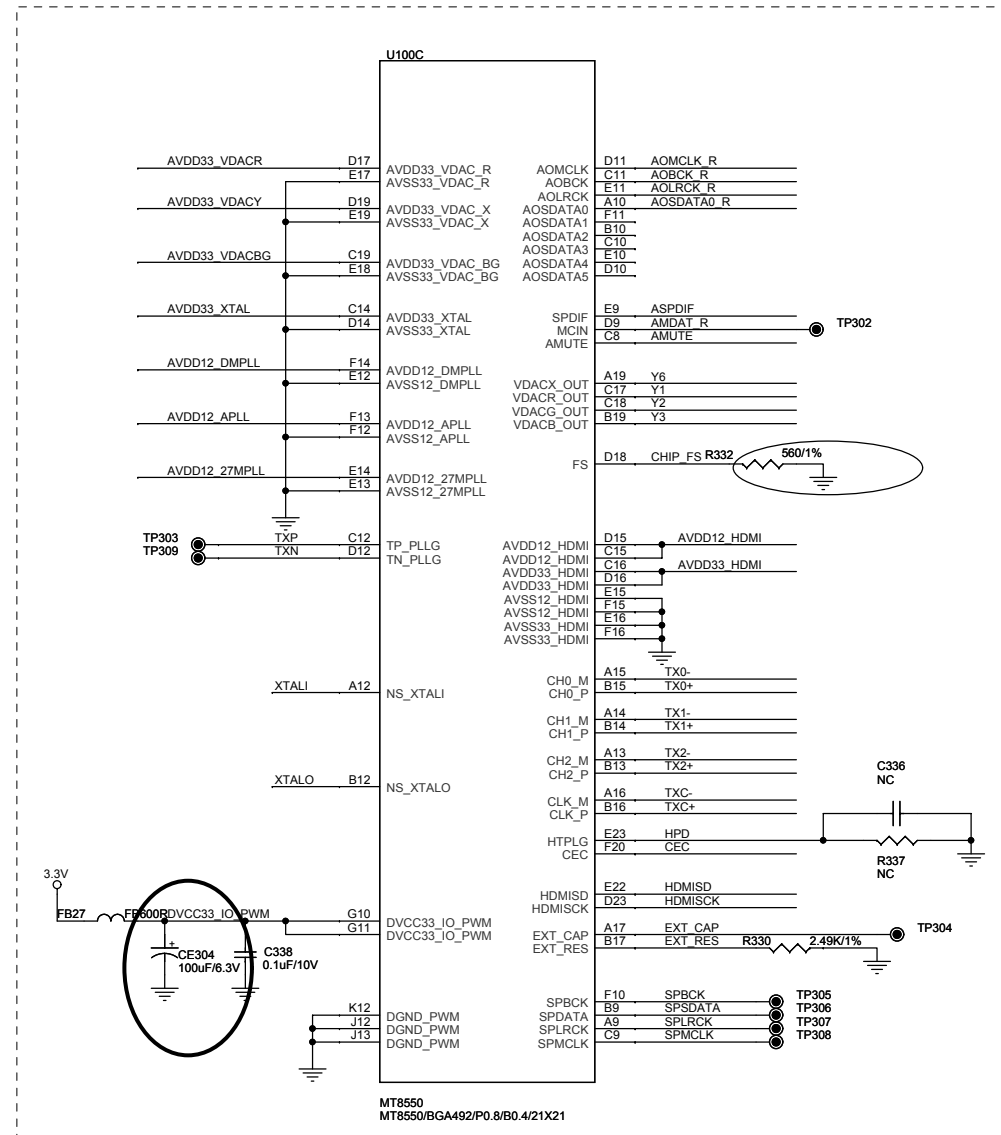
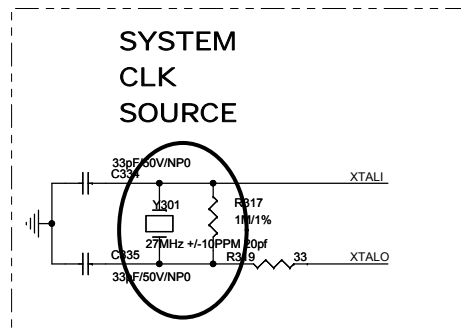
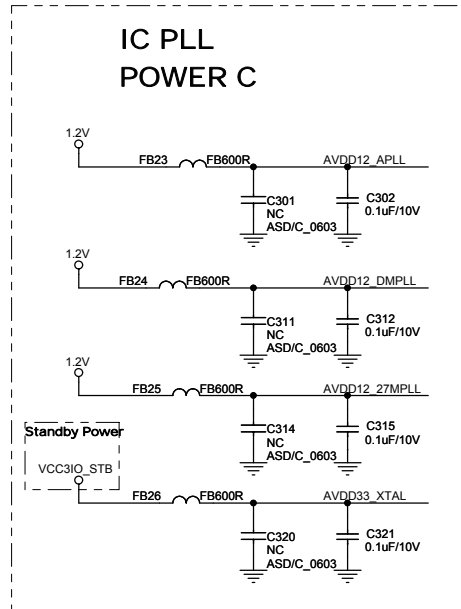
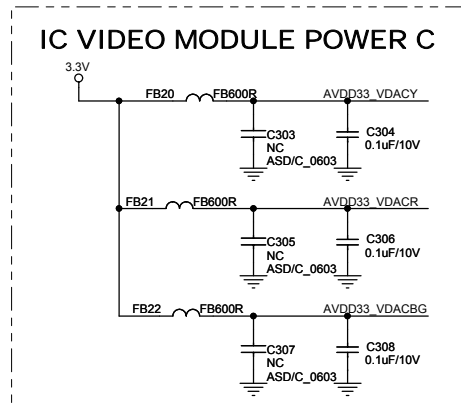
CIRCUIT DIAGRAM-DVD Main Board





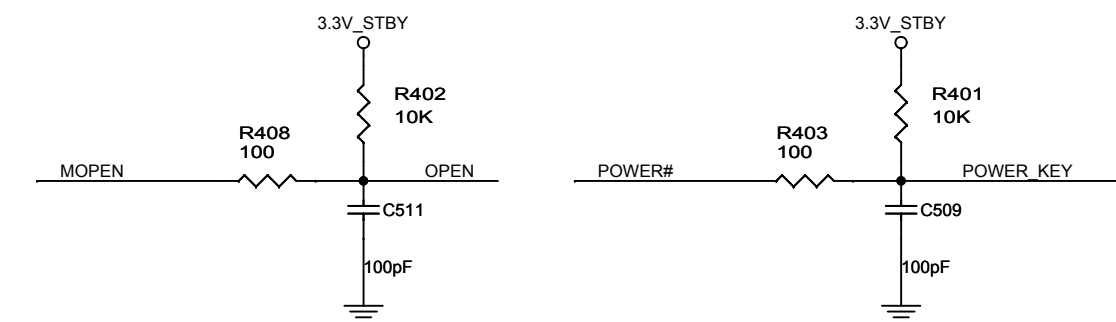
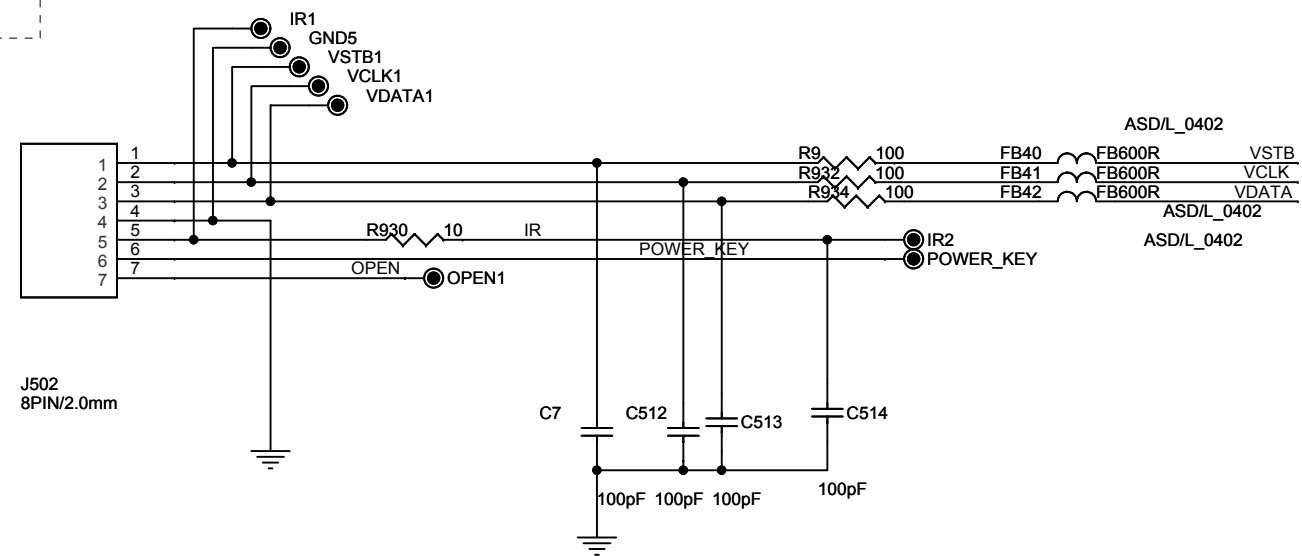
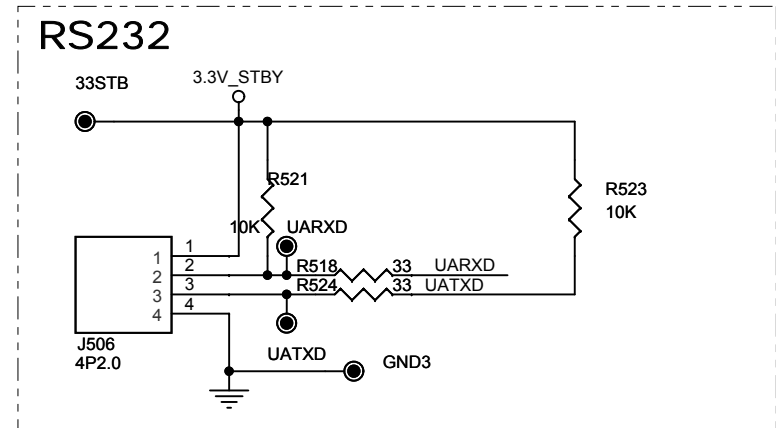
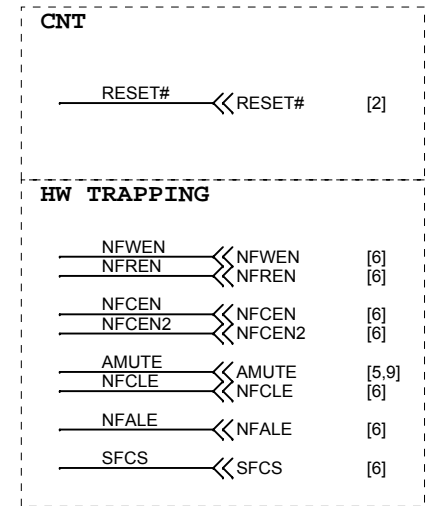
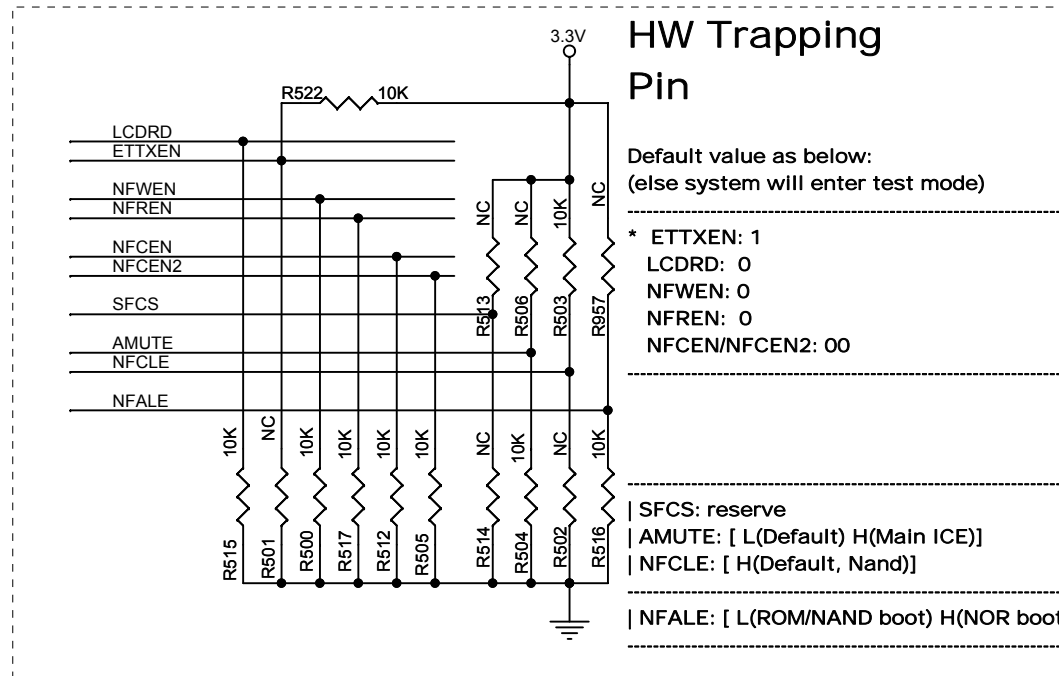
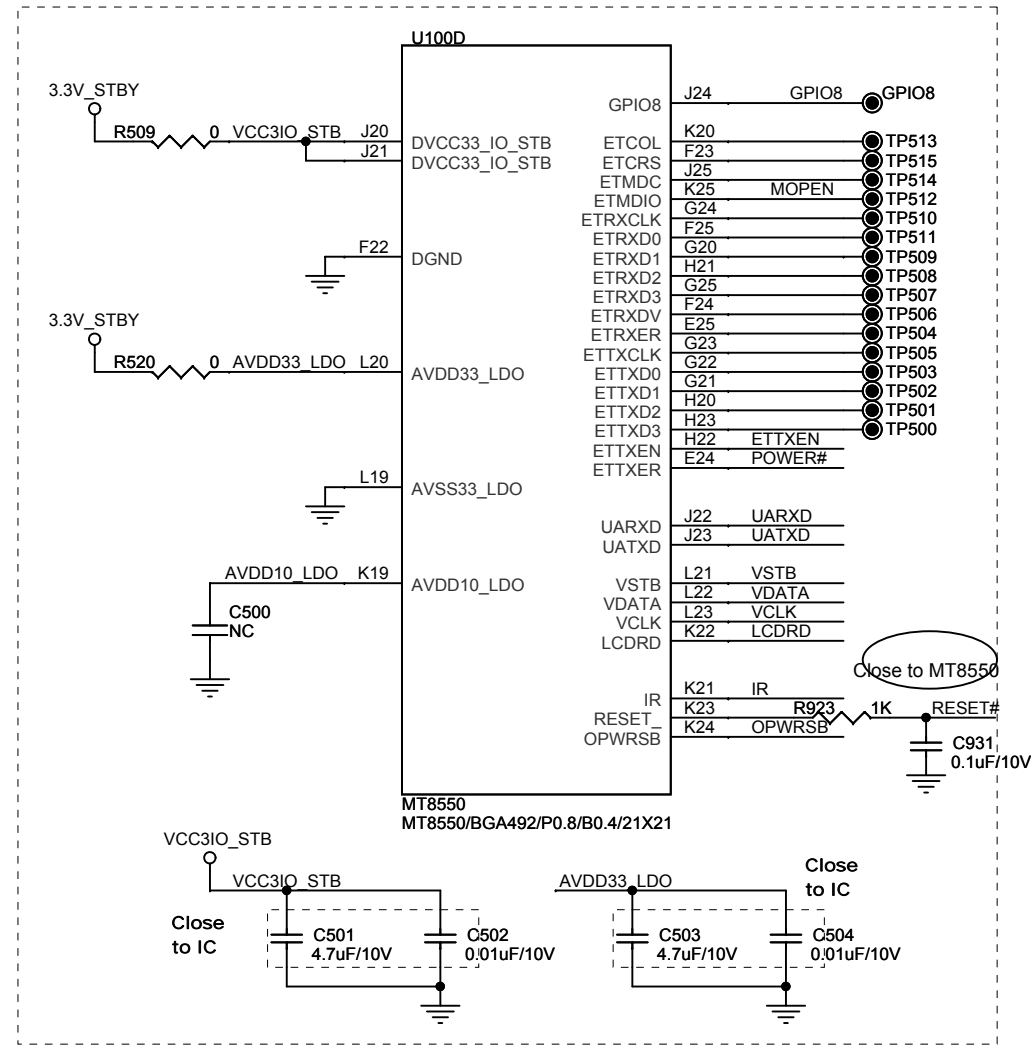
CIRCUIT DIAGRAM-DVD Main Board



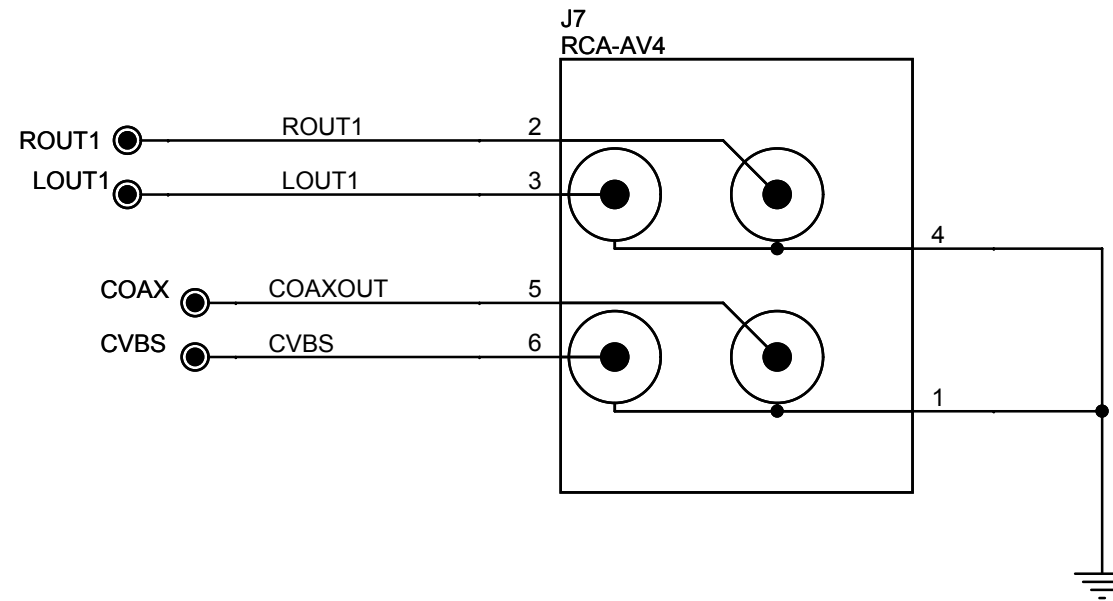
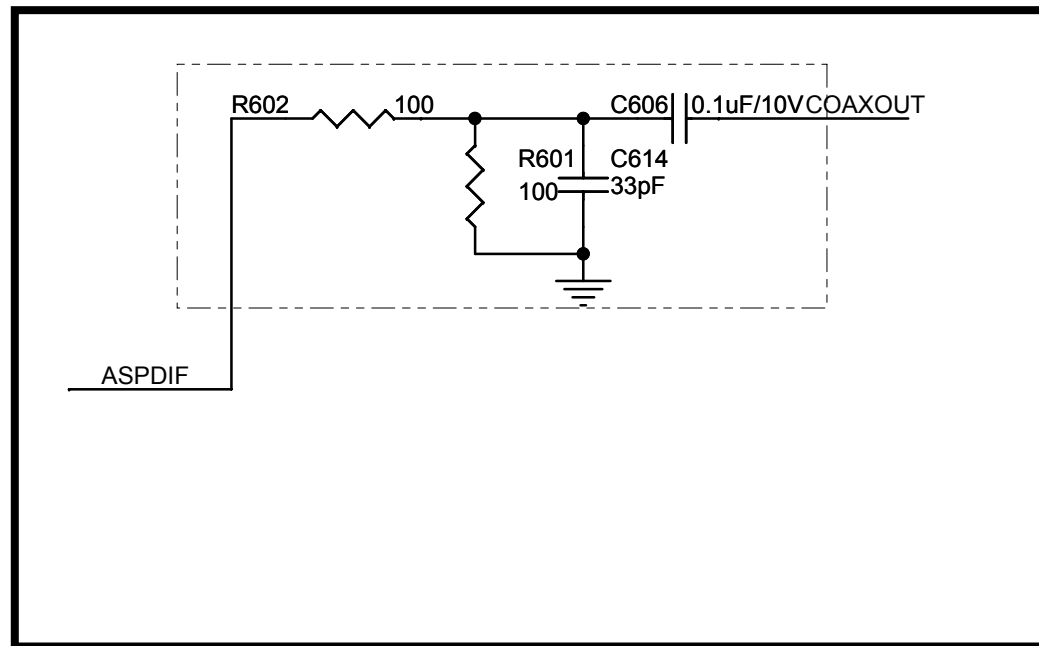
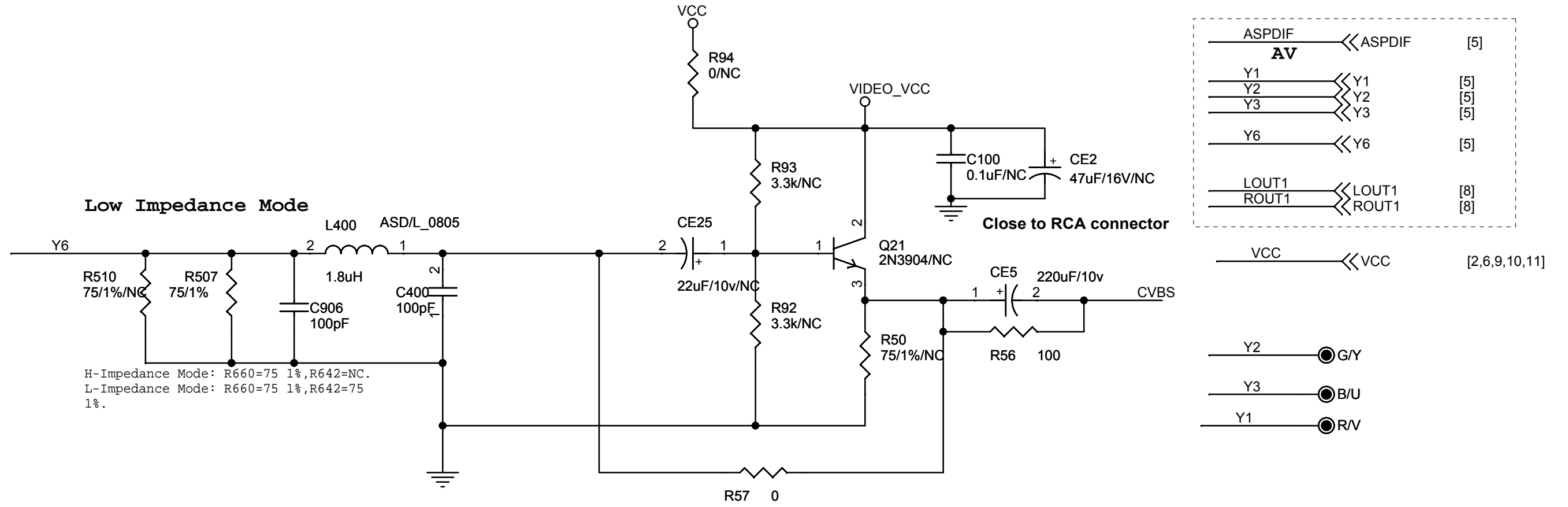


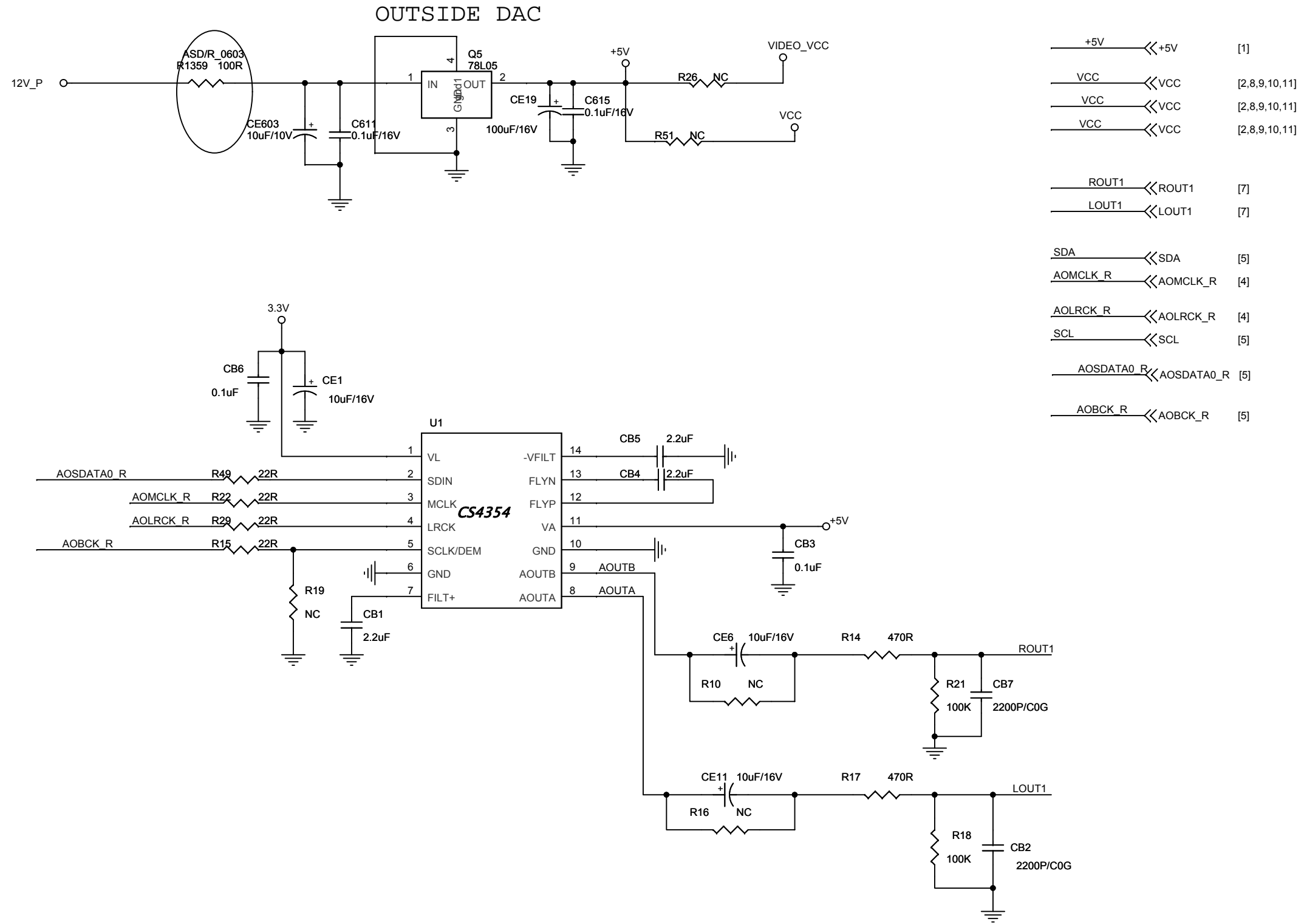


CIRCUIT DIAGRAM-DVD Main Board



CIRCUIT DIAGRAM-DVD Main Board

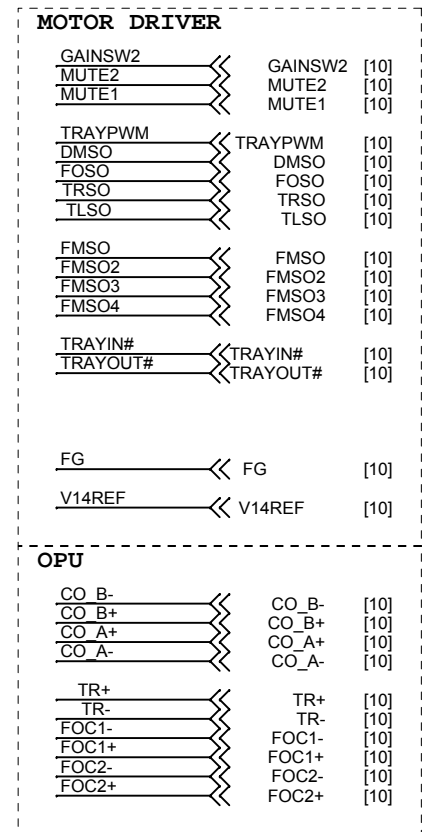
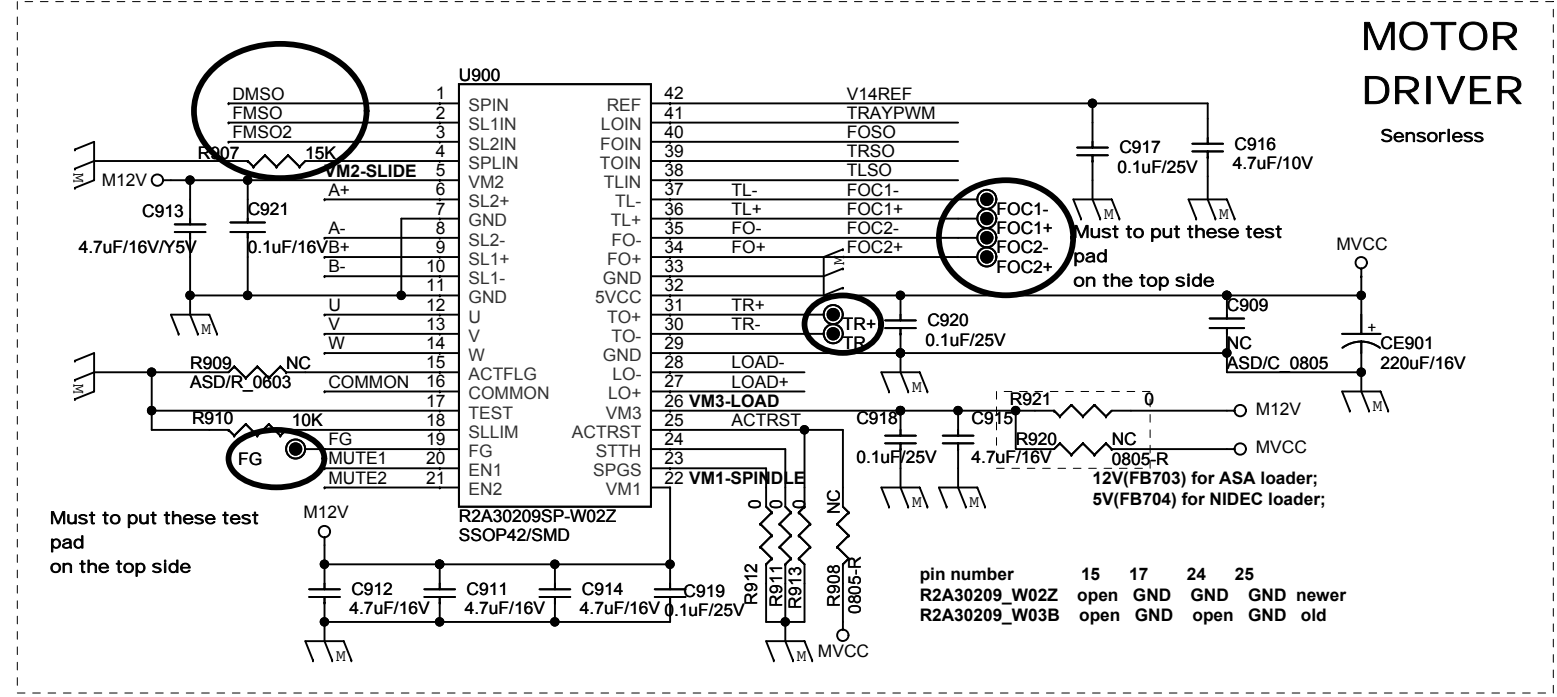
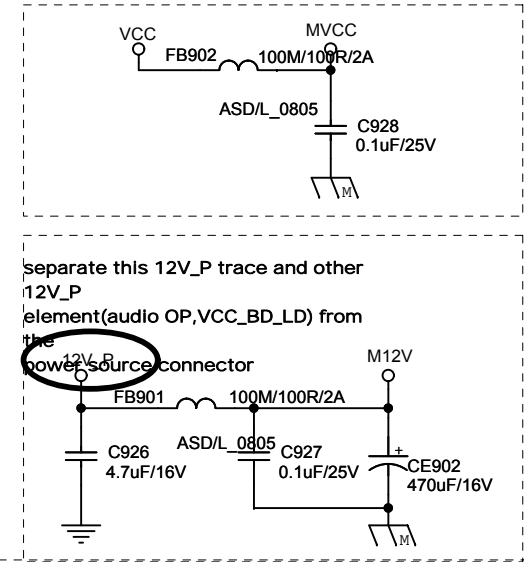




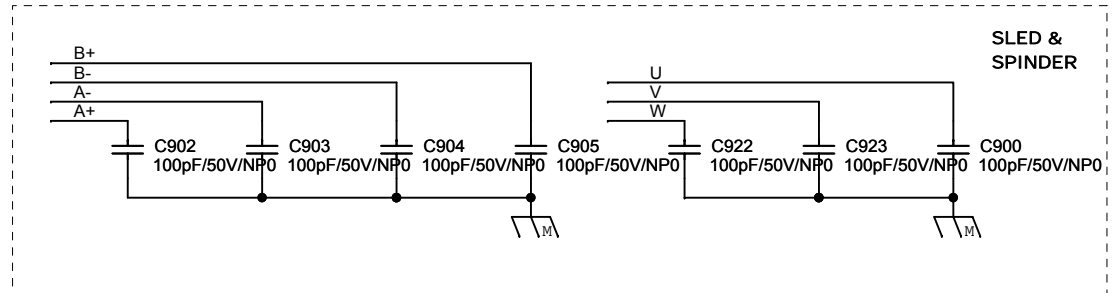
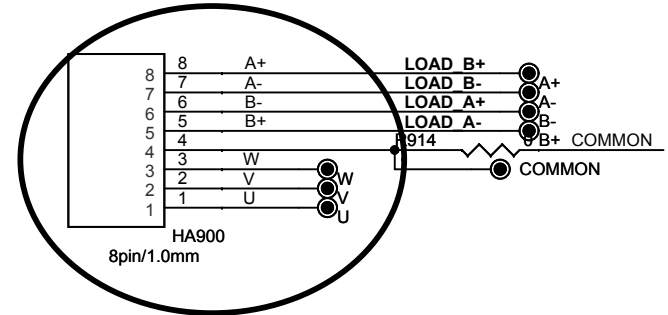
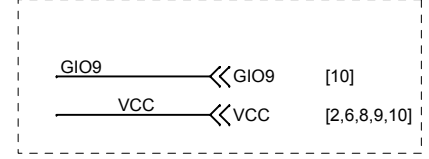
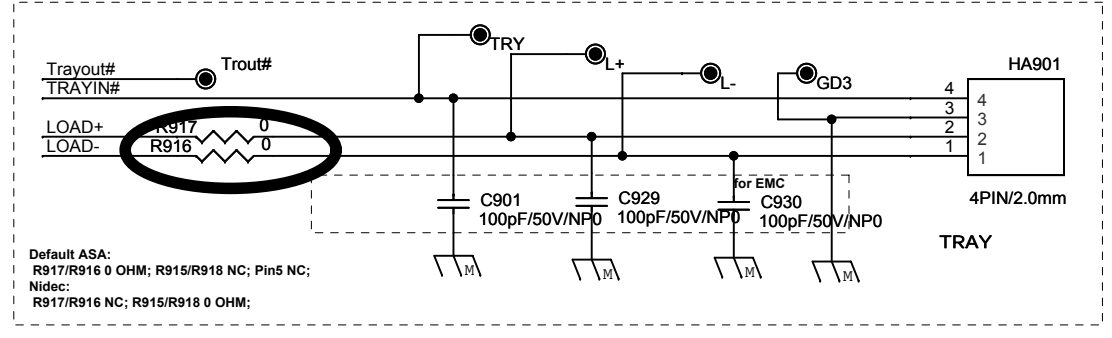
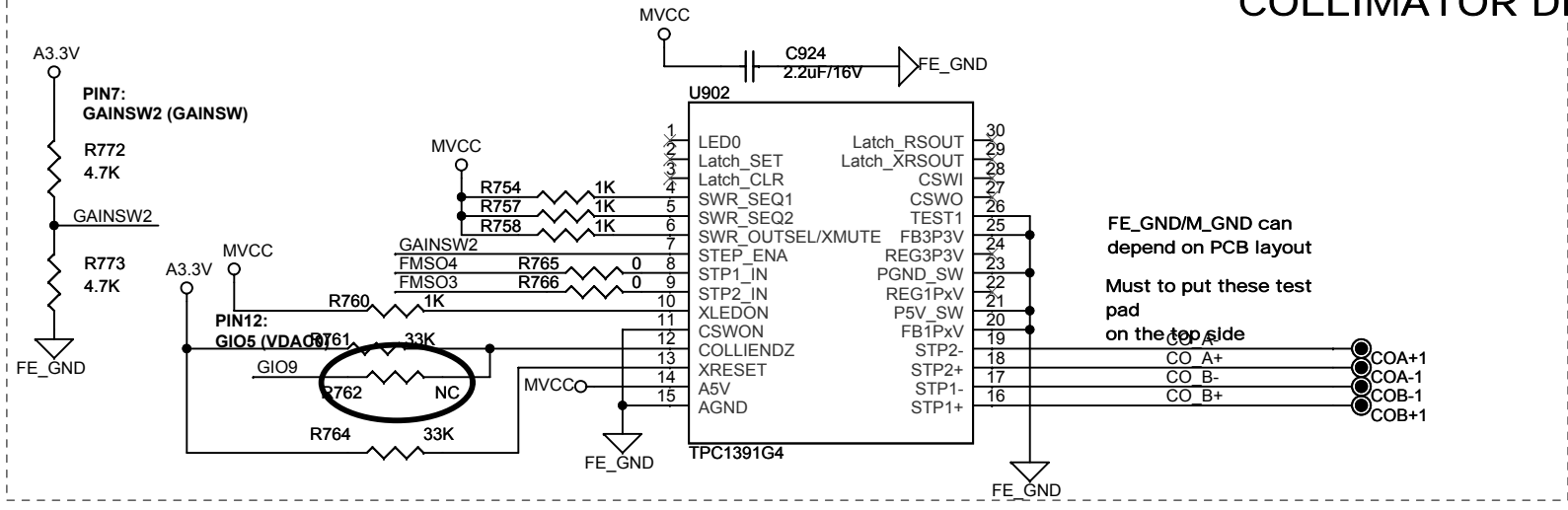


CIRCUIT DIAGRAM-DVD Main Board

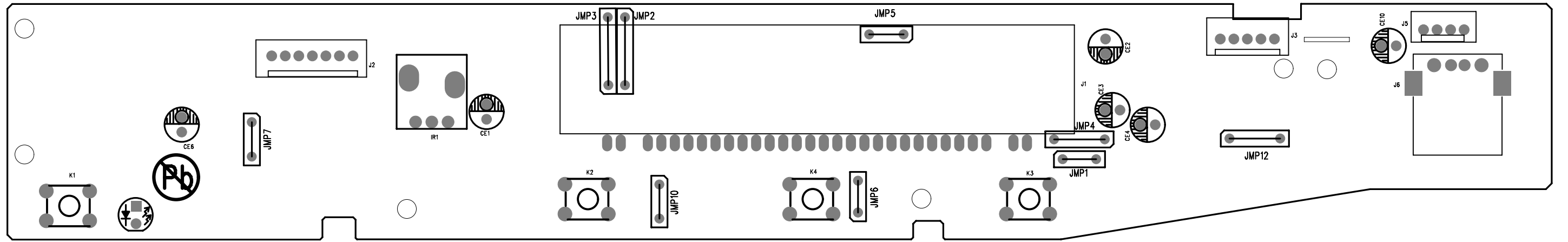
MOTOR POWER

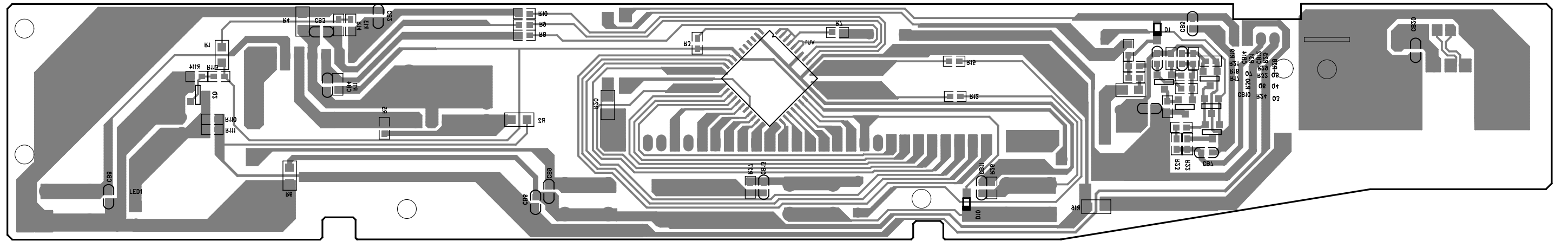


COLLIMATOR DRIVER



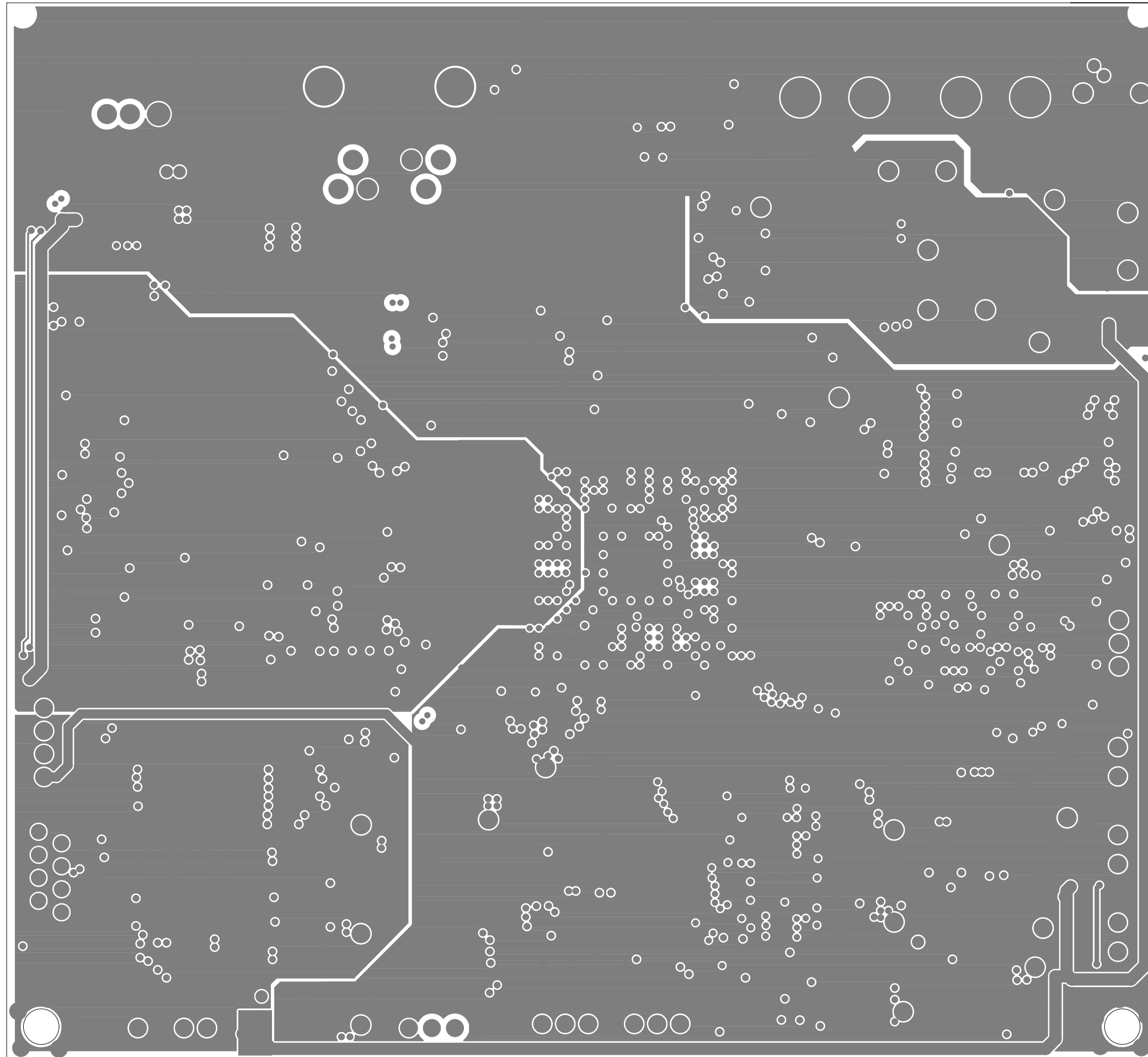




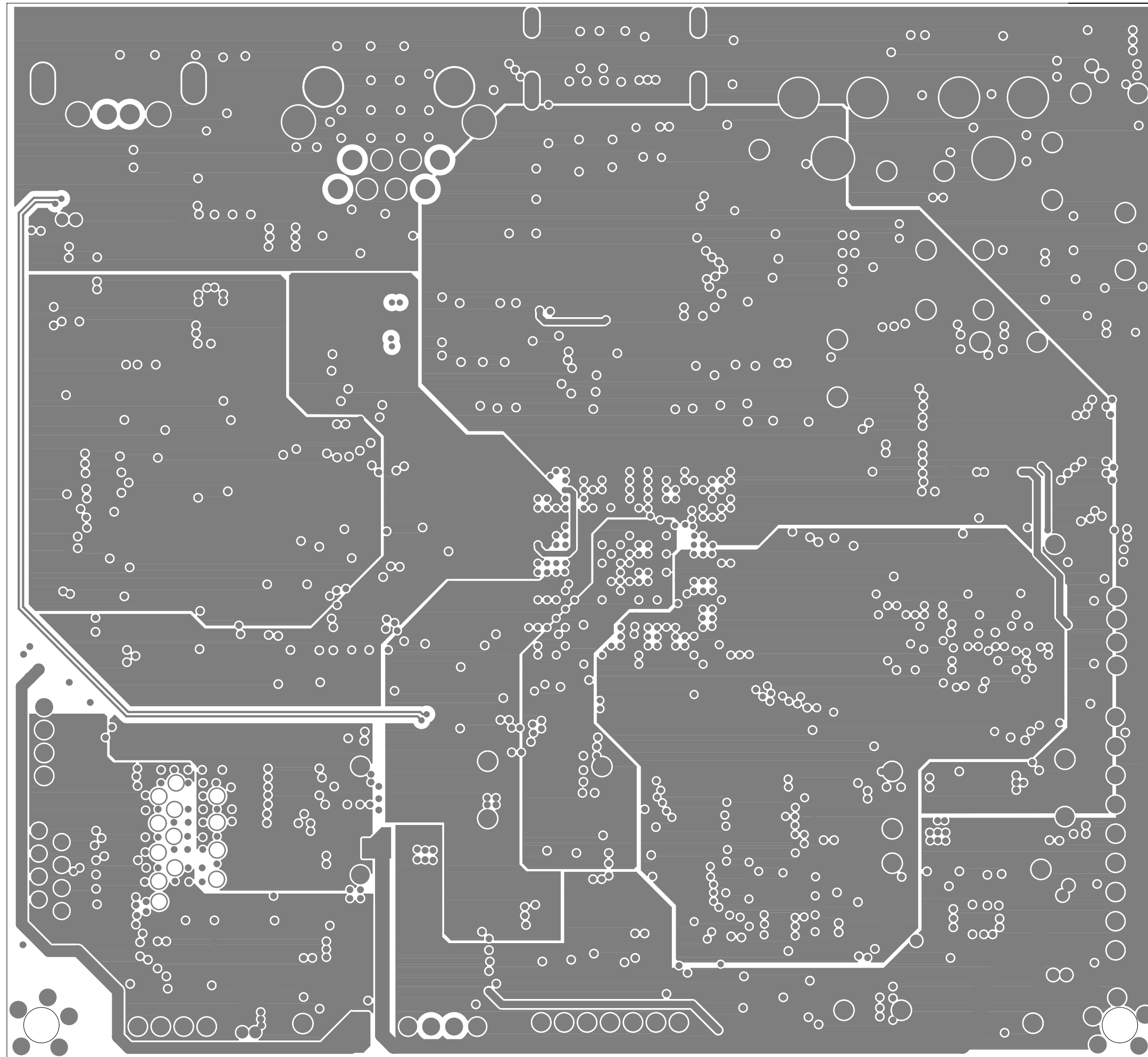


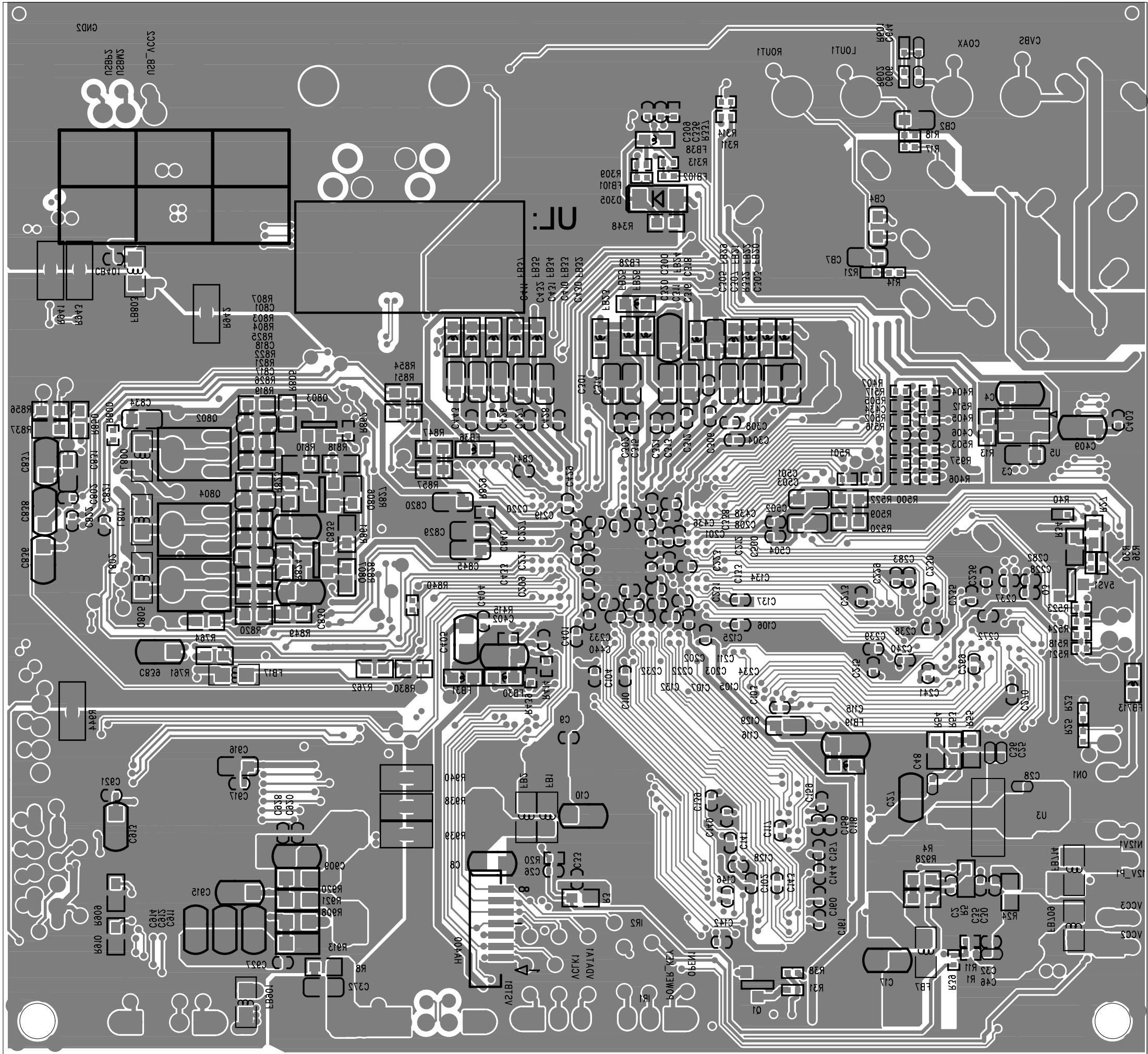


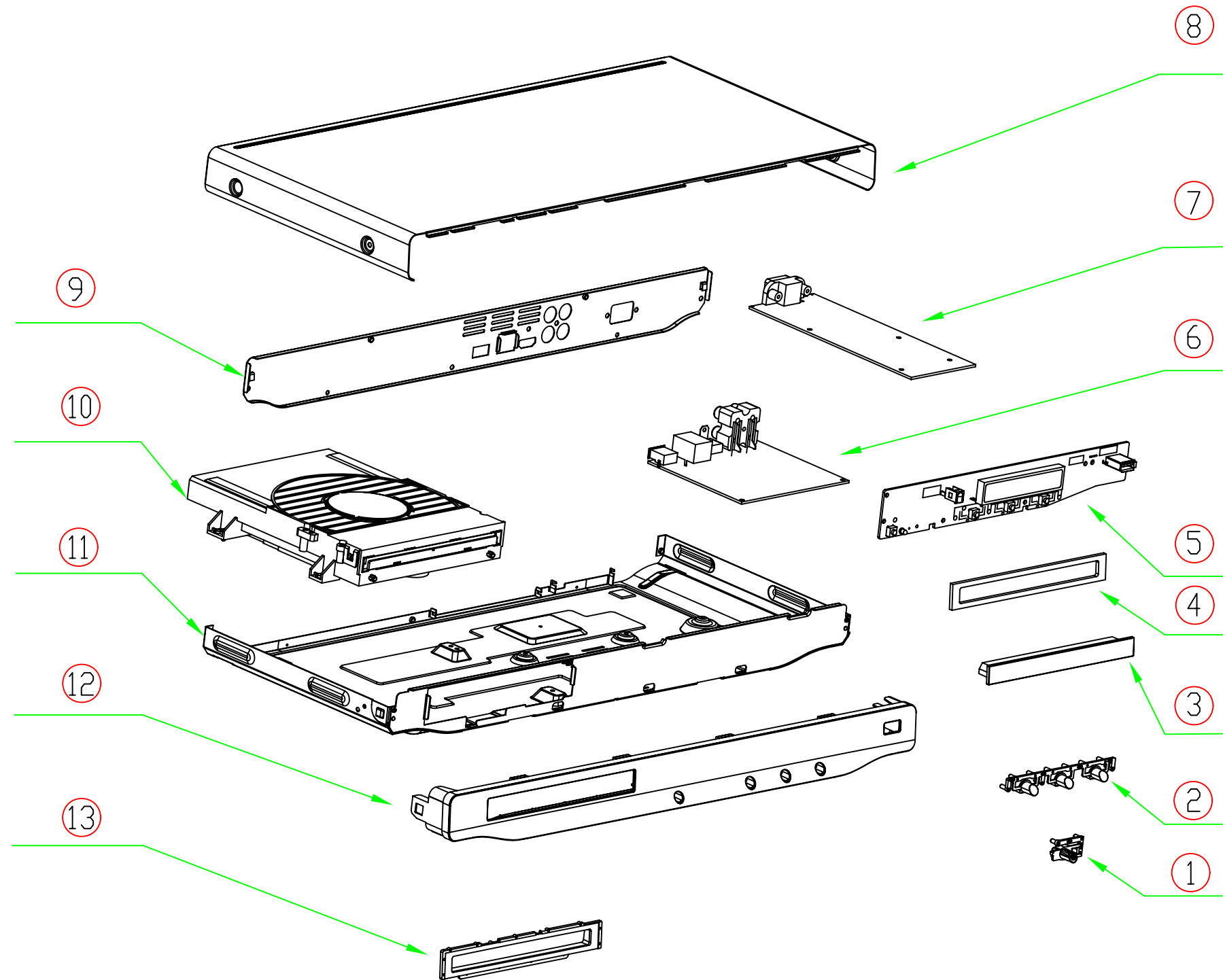
Main PCB - Gnd layout



Main PCB - Power layout







## 9.0 REVISION LIST

---

Version 1.0

- Initial release